

# ENR THE TOP 400

Overview [p. 54](#) // Profitability [p. 54](#) // Top 400 Volume [p. 54](#) // Backlog [p. 54](#) // Markets' Share of Total Revenue [p. 55](#)  
Revenue by Owner Type [p. 55](#) // Domestic and International Staff Hiring [p. 55](#) // International Market Analysis [p. 58](#) //  
Past Decade Contracting Revenue [p. 58](#) // Top 400 Dialogue [pp. 59, 66](#) // Messer's Copper Dome [p. 60](#) // Top 20 Contractors by  
Sector [pp. 62-63](#) // Swinerton's Marathon Concrete Pour [p. 64](#) // Turner Invests in Mental Health [p. 67](#) // Top 100 by New  
Contracts [p. 68](#) // Top 50 Contractors Working Abroad [p. 70](#) // Top 50 Domestic Heavy Contractors [p. 71](#) // Top 50 Domestic  
Building/Manufacturing [p. 72](#) // How To Read the Tables [p. 72](#) // Top 400 List [pp. 75-83](#) // Where To Find the Top 400 [p. 84-86](#)



NUMBER 201

PHOTO COURTESY OF BERNARDS

**GOOD SEAT** Steelworker John Arellano works on the 24,000-sq-ft Performing Arts Center at Crafon Hills College in Yucaipa, Calif., for Top 400 contractor Bernards.

## Proceeding With Caution

Contractors say they are shoring up resources to reduce risks as market volatility threatens to throw projects off balance [By Emell Adolphus and Jonathan Keller](#)



Uncertainty has not yet come home to roost for this year’s Top 400 Contractors, based on the \$600-billion total revenue they reported for 2024—up 7.9% for listed firms even as they balance limited labor resources against rising construction costs and rapidly shifting project demands. But behind the boost, contractors say cracks in waning consumer confidence are appearing as owners cancel some

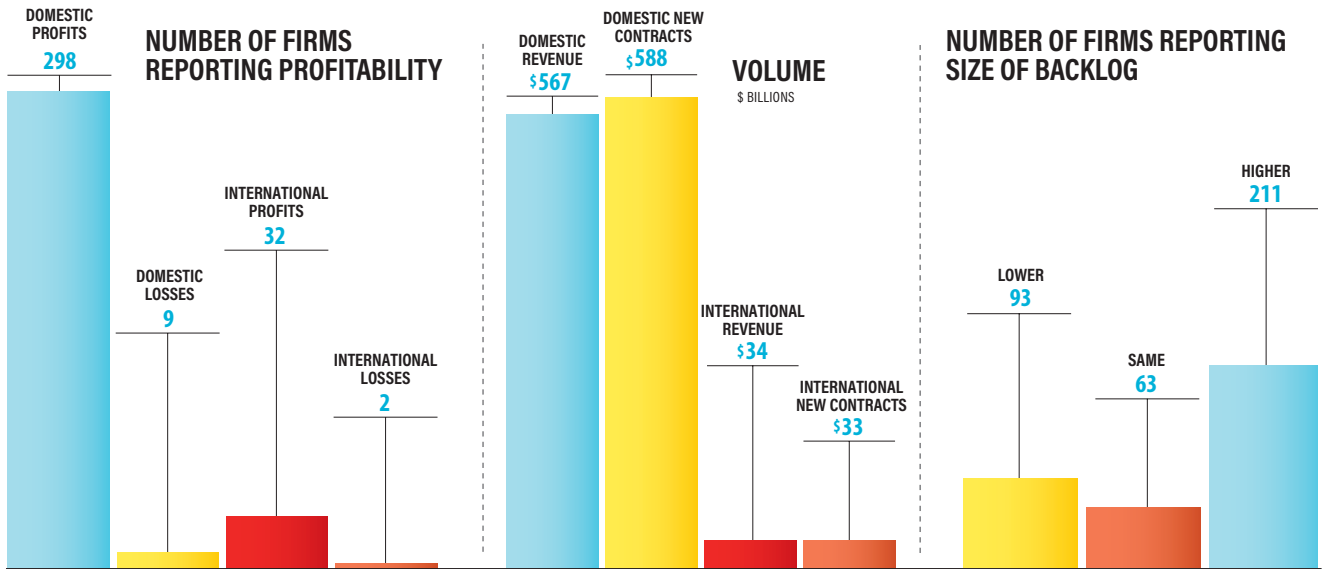
projects and pause others—amid confusion over the Trump administration’s “America First” agenda.

“We are only a few months into the second term of the Trump administration, so it is probably a little premature to say what the downstream market impacts are of these policies,” says Keith Poettker, chairman and CEO of Poettker Construction Co., ranked No. 339. Even so, he still believes the “long-term strategy” of America First will “create robust manufacturing growth expansion in the U.S. driven by both foreign direct investment and domestic manufacturing capital improvement expansion.”

In the short term, contractors say uncertainty over new economic policies has added another layer of risk to an increasingly complex construction market. “Tariffs, inflation, fluctuating interest rates, shifting consumer sentiment and geopolitical tensions—all have real implications for project viability and cost,” says Erik Haslem, CEO of contractor BHI, ranked at No. 210. “They reflect the broader volatility we’re seeing across the AEC industry.”

Labor shortages “remain a persistent issue” in the industry, “impacting timelines and productivity,” says Clayco CEO Anthony Johnson. “Changes in policies,

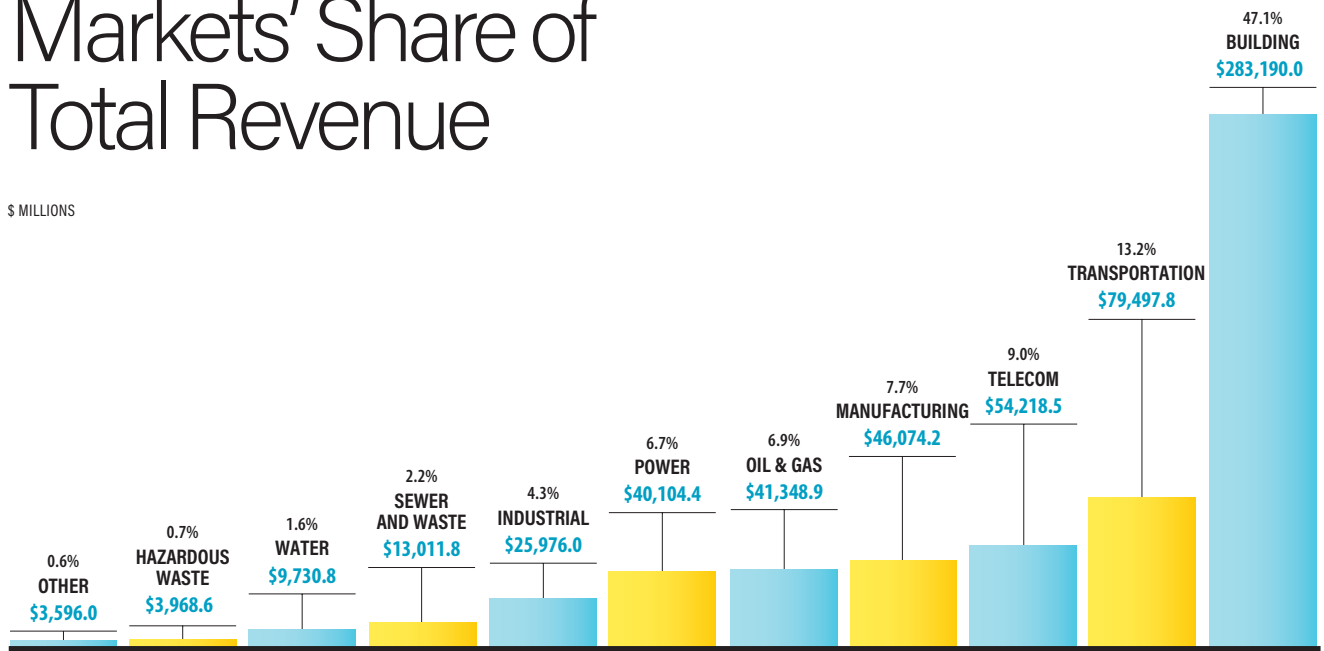
## 2024-25 at a Glance



ONLY INCLUDES DATA FROM FIRMS ON THE TOP 400 LIST.

# Markets' Share of Total Revenue

\$ MILLIONS



ONLY INCLUDES DATA FROM FIRMS ON THE TOP 400 LIST.

client demands and economic conditions require agility and proactive planning,” he adds, which can put more pressure on labor resources to prevent projects from being shelved.

Johnson adds that Clayco, like many firms, is focused on “building resilient teams, investing in workforce development and adapting our operations to stay ahead of where the market is going.” Economists say deployment of Trump’s tariff policy over the next few months will be key in determining that direction.

### Shifting Politics, Policies, and Priorities

President Donald Trump sent global markets into a tailspin with the April 2 rollout of his tariffs, which he described as a mechanism to bring jobs “roaring back into our country” and to “supercharge our domestic industrial base.”

Trump has since reduced previously announced tariff increases directed at China and the U.K. amid reports of new trade deals with those countries. But economists say that the impact of his policies still is working its way through the global economy.

Inflation fell 2.3% last month, a positive sign and its

**375**

Top 400 Firms filed surveys last year

**64.8%**

of firms report revenue rose between 2023 and 2024

**21.2%**

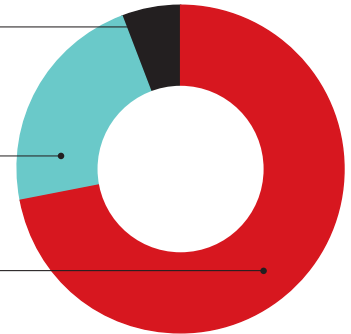
of all Top 400 revenue belongs to the Top 10 firms

### PERCENT SHARE OF TOTAL REVENUE BY OWNER TYPE

FEDERAL  
**5.6%**

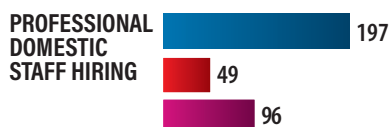
STATE/LOCAL  
**22.3%**

PRIVATE  
**72.1%**



lowest annual rate since February 2021. Mohamed El-Erian, chief economic adviser at Allianz, told Market-Watch that “it’s too early to say if the damage inflicted is irreversible.” Trump’s intention to levy tariffs to raise external revenue still is “liable to inflict collateral damage,” he added.

For some Top 400 firms, collateral damage from



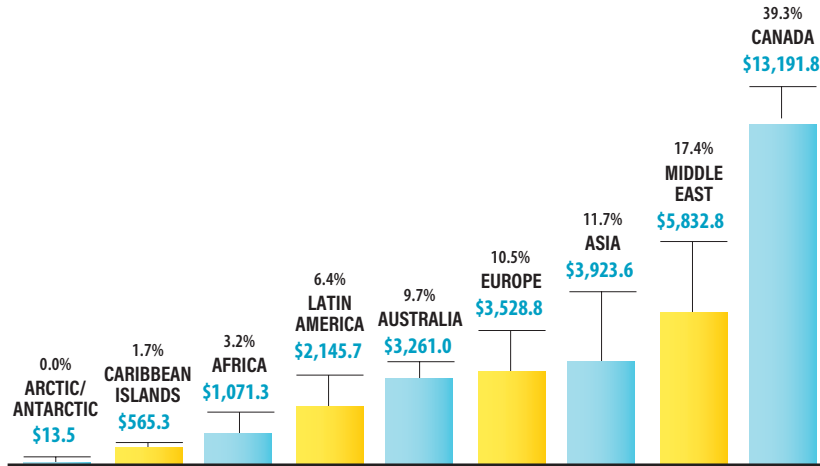
(MEASURED IN FIRMS REPORTING)

SOURCE: ENR

ONLY INCLUDES DATA FROM FIRMS ON THE TOP 400 LIST.

# International Market Analysis

\$ MILLIONS



**NUMBER OF FIRMS IN EACH REGION**



\*DATA FOR ASIA AND AUSTRALIA HAD BEEN REPORTED TOGETHER IN PREVIOUS YEARS.

tariff hikes already is evident. Gabe Rodriguez, Barton Malow vice president of strategy and environmental analysis, says tariffs have “significantly impacted” the No. 35-ranked contractor’s business.

“As a Michigan-based contractor with close ties to Canada, we have been very vigilant about our procurement strategy,” he says. The company identified a tariff risk of \$15 million, or 50% of material costs, on a client’s planned purchase of \$30 million in curtainwall material from a Canadian facility. Rodriguez says his team found a domestic alternative with a guaranteed price increase cap of \$3.9 million that “would not fluctuate with changes in tariff policy.”

Tariffs are adding “serious uncertainty and risk” on a variety of material products, says Jeff Bean, Q&D Construction president of heavy/civil. He expects “suppliers are going to stop honoring their prices and contractors are going to look to owners for reimbursement of additional costs.”

Clayco’s Johnson adds that tariffs have been a double-edged sword for some clients: “On one hand, we have companies looking for reshoring opportunities, clients looking to continue to expand their data center businesses, and domestic companies looking to continue their expansions already underway,” he says. “We

also have these same clients looking to us to help them navigate the current tariff constraints, potential cost uncertainties and a challenging lending environment.” He adds that “the same company can be optimistic and growth focused, but also cautious and uncertain about their investment at the same time.”

**Market Movers and Shakers**

While the America First agenda may boost costs, Bernards CEO Dave Cavecche says the policy could also create opportunities to strengthen domestic industry.

“We’re adjusting our contracting strategies, enhancing scheduling practices and working closely with U.S.-



**“The same company can be optimistic and growth focused, but also cautious and uncertain about their investment at the same time.”**

—Anthony Johnson, CEO, Clayco

**COMPARING THE PAST DECADE’S CONTRACTING REVENUE**



\$ BILLIONS SOURCE: ENR

# The Top 400 Dialogue

## What is your firm's most pressing challenge and its wider implications for the AEC industry?

**#107**  
on the  
Top 400 List



**DAMIAN EALLONARDO, CHICAGO PRESIDENT**  
**W.E. O'NEIL CONSTRUCTION CO.**  
Chicago, Ill.

"As the economy struggles to find a consistent growth trajectory, supply and demand for our business is inconsistent. Because we maintain a growth mentality, this inconsistency has caused us to become more entrepreneurial in our pursuit strategies."

**#289**  
on the  
Top 400 List



**ALAN R. ELIA JR., CEO**  
**SEVERSON ENVIRONMENTAL SERVICES**  
Niagara Falls, N.Y.

"Our most significant challenge is being selective in the projects that we bid as we try and manage our personnel and equipment resources. There are so many opportunities in the industry and there is only so much work that we can manage."

## How do you expect federal policy changes around diversity, equity and inclusion to affect your company?

**#11**  
on the  
Top 400 List



**DERON BROWN, COO AND PRESIDENT**  
**PCL CONSTRUCTION**  
Denver, Colo.

"Regardless of external mandates, we remain committed to building a more inclusive industry because we believe diverse teams lead to stronger outcomes for our clients and communities."

**#95**  
on the  
Top 400 List



**DAVID THOMACK, PRESIDENT**  
**THE BOLDT CO.**  
Appleton, Wis.

"For firms and customers who entered into their DEI efforts with the right intentions, it doesn't seem there's been much impact at this point. Diversity, equity and inclusion remain important, to the level it aligns with your firm's culture and business goals."

## Higher Education | By Jonathan Keller



Messer Construction (**No. 79**) is nearing completion on the Gordon Ford College of Business at Western Kentucky University in Bowling Green. Designed by Gensler, the college's host building features a 70-ft x 26-ft elliptical copper dome with a 6-ft-dia column. The framing for the dome was prefabricated and assembled on site. Its copper panels were field-measured, cut to fit and soldered together to create a watertight seal. The 113,000-sq-ft structure, on track for LEED Gold certification, will feature a virtual reality simulation space and a stock trading lab with access to Bloomberg terminals. The project is due to complete in fall 2025.

based specialty suppliers," Cavecche says. "We also offer clients U.S.-made alternatives that still meet quality standards and project goals." The company is ranked at No. 201.

For Severson Environmental Services Inc., ranked at No. 289, CEO Alan R. Elia Jr. says it's tough to understand pricing ramifications from policies and tariffs and deal with "the escalations post bid or post contract." He adds that the contractor "and many in the industry" are waiting to understand whether looming Cybersecurity Maturity Model Certification requirements will become contractual mandates. Set to be implemented starting this year, the requirements es-

tablish a tiered system to verify that contractors have set up required security measures to protect federal contract data and controlled unclassified information.

"This is a large investment for small businesses to get into compliance, and there are still many unknowns," says Elia.

#### What the Numbers Say

All the key construction markets ENR tracks grew between 2023 and 2024, with exception of industrial process, which fell 9.9%. Telecommunications saw the largest growth, up 59.7% from last year; and 188.5% since 2021. Sewer and waste rose 23.7%, power was up

# The Top 20 Contractors by Sector

1		TELECOMMUNICATIONS	
RANK		Top 20 Revenue: \$46.7 Billion	REVENUE
2025 2024		Top 20 Market Share: 86.2%	IN \$ MIL.
1	2	HITT CONTRACTING	6,743.3
2	1	HOLDER CONSTRUCTION	6,680.0
3	4	DPR CONSTRUCTION	3,651.9
4	3	TURNER CONSTRUCTION CO.	3,609.7
5	6	CLAYCO	3,280.0
6	5	MASEC INC.	2,791.3
7	9	THE WHITING-TURNER CONTRACTING CO.	2,464.3
8	7	FORTIS CONSTRUCTION	1,977.9
9	8	MORTENSON	1,754.9
10	12	JE DUNN CONSTRUCTION CO.	1,750.0
11	14	WALBRIDGE	1,477.2
12	13	BRASFIELD & GORRIE	1,465.1
13	17	HENSEL PHELPS	1,415.3
14	11	STO BUILDING GROUP	1,314.0
15	10	CLUNE CONSTRUCTION	1,266.0
16	**	THE WALSH GROUP	1,261.2
17	19	GRAY	1,229.6
18	20	SKANSKA USA	968.7
19	**	RYAN COS. US INC.	934.0
20	15	THE WEITZ CO.	705.2

2		TRANSPORTATION	
RANK		Top 20 Revenue: \$43.3 Billion	REVENUE
2025 2024		Top 20 Market Share: 54.4%	IN \$ MIL.
1	1	KIEWIT CORP.	4,633.3
2	3	DRAGADOS	3,558.6
3	2	THE WALSH GROUP	3,336.1
4	6	GRANITE CONSTRUCTION	2,725.5
5	8	SKANSKA USA	2,582.1
6	5	HENSEL PHELPS	2,576.8
7	4	COLAS INC.	2,370.1
8	9	FLATIRON CONSTRUCTION CORP.	2,239.5
9	7	TUTOR PERINI CORP.	2,193.6
10	10	CLARK GROUP	2,145.9
11	13	AECOM	2,119.8
12	**	CONSTRUCTION PARTNERS INC.	1,823.9
13	11	FERROVIAL CONSTRUCTION	1,737.5
14	12	BECHTEL	1,576.0
15	15	TURNER CONSTRUCTION CO.	1,476.4
16	14	FLUOR	1,306.5
17	17	ALLAN MYERS	1,272.3
18	16	VINCI CONSTRUCTION USA	1,242.3
19	18	HERZOG ENTERPRISES INC.	1,176.0
20	**	MASEC INC.	1,167.9

3		OIL & GAS	
RANK		Top 20 Revenue: \$40.5 Billion	REVENUE
2025 2024		Top 20 Market Share: 97.9%	IN \$ MIL.
1	1	MCDERMOTT INTERNATIONAL	8,911.0
2	3	BECHTEL	7,582.0
3	2	ZACHRY GROUP	5,330.0
4	5	FLUOR	3,172.4
5	6	TURNER INDUSTRIES GROUP LLC	3,096.8
6	**	PERFORMANCE CONTRACTORS INC.	2,654.5
7	7	MASEC INC.	2,267.7
8	4	KIEWIT CORP.	1,510.0
9	8	MICHEL	993.4
10	9	S&B	942.1
11	12	SAULSBURY INDUSTRIES INC.	790.0
12	10	BURNS & MCDONNELL	686.3
13	13	CAJUN INDUSTRIES HOLDINGS LLC	556.0
14	11	MATRIX SERVICE CO.	479.4
15	14	APTIM	342.3
16	**	BLACK & VEATCH	305.6
17	16	KIELY FAMILY OF COS.	260.2
18	18	AUSTIN INDUSTRIES	227.0
19	17	PCL CONSTRUCTION ENTERPRISES INC.	210.1
20	**	THE CIANBRO COS.	145.0

LISTS MAY INCLUDE FIRMS WHO DO NOT APPEAR ON THE TOP 400.

18.9%, oil and gas grew 16.6% and transportation climbed 11.4%. The sewer and waste market has increased 71.7% over the past two years.

Among Top 400 listed firms, HITT Contracting and Holder Construction both reported large revenue jumps driven by work in telecommunications, with the former rising to No. 10 from No. 26 last year and the latter to No. 15 from No. 30. “Unlike consumer spending, which quickly responds to economic changes, the commercial construction industry is buffered by a backlog of funded projects,” says HITT CEO Kim Roy. “As a result, we typically feel the impact of a contraction 12 to 18 months later than other sectors.” But she adds, “We’re fortunate that our clients have entrusted us with healthy backlog increases across the nation, which gives us confidence in a strong year ahead.”

Aristeo Construction jumped to No. 73 from No. 154 related to strong manufacturing sector work, while SOLVEnergy joined the list’s Top 100 at No. 66, based on its level of solar energy construction. Performance Contractors returned to the Top 400, at No. 47, after not filing for the past three years. Barton Malow attributes its drop to No. 35 in 2025 from No. 19 last year to completion of a \$5-billion project.

Total domestic revenue for Top 400 contractors increased 8.7%, to \$567.1 billion in 2024. Firms also reported a strong rise in domestic new contract totals between 2023 and 2024, up 14.4% to \$588 billion. Median new contract totals rose 7.7% to \$669.02 million. Also, 97.1% of reporting firms say they made a domestic profit, in line with previous years.

### Downturn Signs

However there were a few signs of a downturn in the contracting market. Median firm revenue stayed virtually flat between 2023 and 2024, after rising double



**“We’re fortunate that our clients have entrusted us with healthy backlog increases across the nation, which gives us confidence in a strong year ahead!”**

—Kim Roy, CEO, HITT Contracting

# The Top 20 Contractors by Sector

4		POWER		
RANK		Top 20 Revenue: \$34.7 Billion		REVENUE
2025	2024	Top 20 Market Share: 86.4%		IN \$ MIL.
1	1	MASTEC INC.		5,499.2
2	2	KIEWIT CORP.		4,297.6
3	5	MORTENSON		2,736.3
4	3	BECHTEL		2,497.0
5	6	BLACK & VEATCH		2,465.0
6	7	MOSS		2,140.2
7	**	SOLV ENERGY		1,892.0
8	4	BURNS & MCDONNELL		1,872.6
9	8	MICHELS		1,760.7
10	11	DAY & ZIMMERMANN		1,521.0
11	10	DEPCOM POWER		1,488.5
12	9	MCCARTHY HOLDINGS INC.		1,397.7
13	13	PCL CONSTRUCTION ENTERPRISES INC.		878.6
14	14	FERREIRA CONSTRUCTION CO. INC.		856.3
15	16	ELECTRICAL CONSULTANTS INC.		650.0
16	**	GEMMA POWER SYSTEMS		607.7
17	19	ZACHRY GROUP		562.0
18	**	SUNDT CONSTRUCTION INC.		561.5
19	**	NEXAMP		496.0
20	15	JINGOLI - DCO		489.9

5		INDUSTRIAL		
RANK		Top 20 Revenue: \$17.7 Billion		REVENUE
2025	2024	Top 20 Market Share: 68.3%		IN \$ MIL.
1	2	FLUOR		3,749.1
2	3	DPR CONSTRUCTION		2,052.4
3	6	HASKELL		1,094.2
4	4	GRAY		1,038.9
5	5	DENNIS GROUP		999.9
6	10	IPS-INTEGRATED PROJECT SERVICES LLC		899.9
7	13	TURNER CONSTRUCTION CO.		739.1
8	7	THE WHITING-TURNER CONTRACTING CO.		728.6
9	1	BECHTEL		713.0
10	**	CR MEYER		638.2
11	8	GILBANE BUILDING CO.		601.0
12	9	MIRON CONSTRUCTION CO. INC.		592.1
13	18	THE YATES COS. INC.		560.8
14	12	CLAYCO		556.0
15	14	STELLAR		531.3
16	15	CRB		475.5
17	19	BURNS & MCDONNELL		466.3
18	16	ALBERICI-FLINTCO		434.3
19	17	STO BUILDING GROUP		431.0
20	**	PCL CONSTRUCTION ENTERPRISES INC.		429.0

6		HAZARDOUS WASTE		
RANK		Top 20 Revenue: \$4.3 Billion		REVENUE
2025	2024	Top 20 Market Share: 108.0%		IN \$ MIL.
1	1	BECHTEL		1,839.0
2	2	FLUOR		678.3
3	3	SEVENSON ENVIRONMENTAL SERVICES		424.9
4	5	ASRC INDUSTRIAL		303.8
5	4	APTIM		281.3
6	8	RAMBOLL GROUP		107.7
7	**	EA ENGINEERING SCIENCE AND TECH.		105.0
8	9	ECC		91.5
9	11	JINGOLI - DCO		77.7
10	14	GOODFELLOW BROS.		73.0
11	12	HALEY & ALDRICH INC.		56.9
12	**	ENGINEERING/REMEDICATION RESOURCE		53.5
13	13	TURNER INDUSTRIES GROUP LLC		42.5
14	10	BURNS & MCDONNELL		33.6
15	**	DENHAM-BLYTHE CO.		33.0
16	**	INDEPENDENCE CONSTRUCTION		30.0
17	**	WIELAND		24.0
18	6	AMES CONSTRUCTION INC.		15.8
19	18	TETRA TECH		10.0
20	**	PEPPER CONSTRUCTION		6.4

LISTS MAY INCLUDE FIRMS WHO DO NOT APPEAR ON THE TOP 400 AND CAN PUSH SECTOR MARKET SHARE PERCENTAGE OVER 100%.

digits during both previous two Top 400 survey cycles. Of 375 firms that filed both this year and last, 64.8% reported an increase in revenue. The previous reading for that number was 77.3%. Overall, 57.5% of reporting firms say they have a higher backlog than on last year's list, slightly up from the 2024 Top 400 proportion, but still down substantially from 72.7% two years ago. Just over 25% of firms on the 2025 survey say their backlogs have shrunk.

Related to non-U.S. markets, revenue dropped 5.1% between 2023 and 2024, to \$33.5 billion from \$35.3 billion. This continues a long-term trend of Top 400

Contractors moving away from work outside the country. In 2015, 84 of the Top 400 reported some international general contracting revenue, making up 19% of their total revenue that year. In 2025, 56 firms report non-U.S. revenue making up only 5.5% of the total.

Kitchell Corp. CEO Wendy Cohen says the contractor is "seeing volatility" amid shifts in federal funding and "looming tariff discussions," which could "drive up costs." But she adds that, "at the same time, there's a lot of momentum—clients are eager to build. It's a complex moment in the market, but one filled with opportunity."

Bechtel, ranked No. 2, says the firm notes strong demand for general contracting services in nuclear power, LNG, critical minerals and advanced manufacturing. The contracting giant attributes the demand to a global push for cleaner energy and "a sharper focus on secure, domestic supply chains," adds Peter Nelson, manager of corporate planning.

Internationally, Bechtel, along with Parsons, was awarded key contracts for the estimated \$7.2-billion expansion of the King Salman International Airport in Riyadh, Saudi Arabia, which is projected to be the world's largest airport at completion.



**"At the same time, there's a lot of momentum—clients are eager to build. It's a complex moment in the market."**

—Wendy Cohen, CEO, Kitchell Corp.



**“Bechtel is capitalizing on these opportunities by investing in our business, expanding our capabilities, and strengthening project execution.”**

—Peter Nelson, Planning Manager, Bechtel

“Our projects are advancing, and we’re seeing strong growth across the business,” he says. “Bechtel is capitalizing on these by investing in our business, expanding our capabilities and strengthening project execution.”

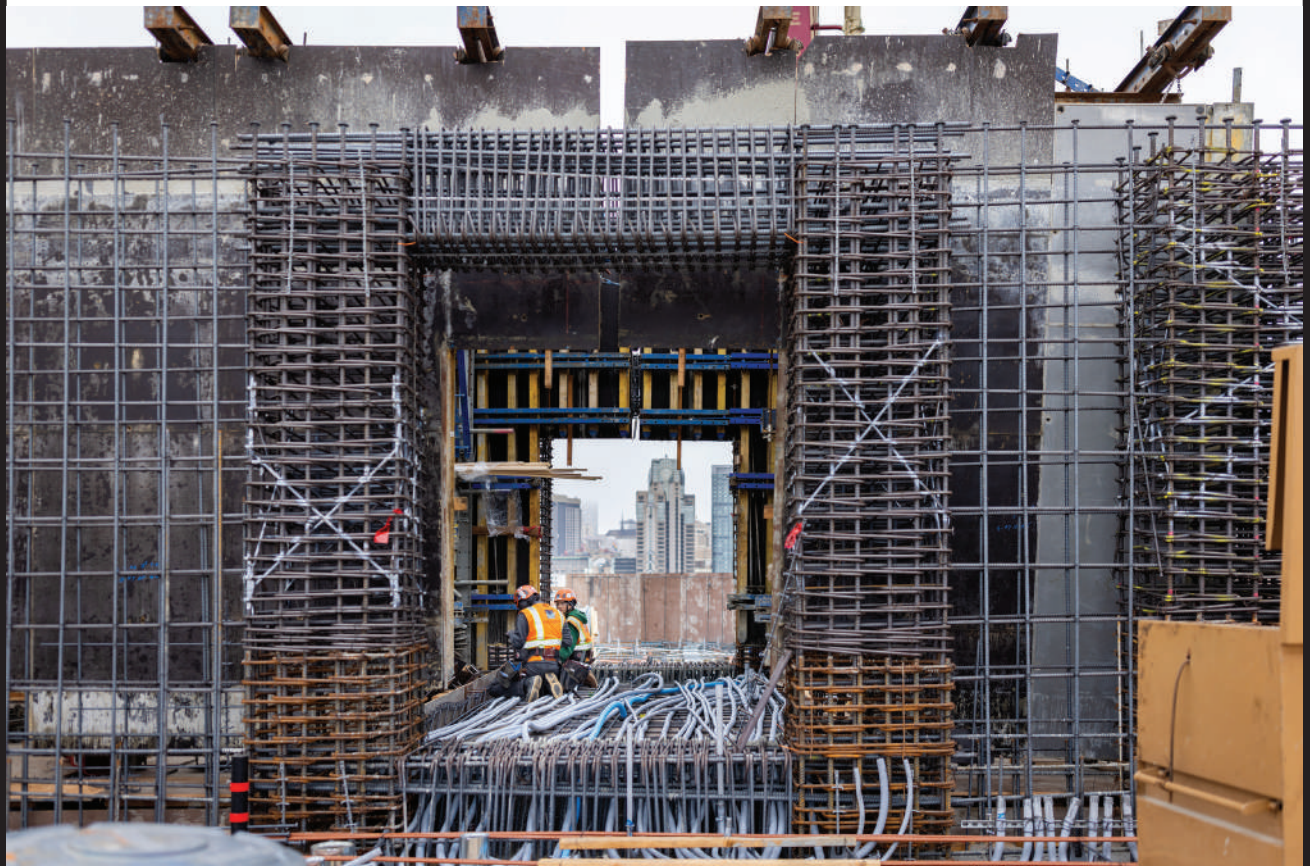
### Streamlining Preconstruction

Top 400 contractors say they are finding the greatest project bottlenecks during the preconstruction phase as firms navigate increased budget restrictions with impacts on scheduling, quality, safety and workforce availability.

Clancy & Theys Construction Co. says tariff discussions have already started in preconstruction, “but we haven’t gotten to a point where we are dramatically shifting our strategy short of trying to include escalation and tariff clauses in contracts,” says President Baker Glasgow. The firm is ranked No. 148.

Cara Carline, director of preconstruction-estimating at No. 152-ranked Catamount Constructors Inc., adds, “Volatile material pricing, supply chain fluctuations and evolving designs demand precise budgeting

### Swinerton’s Big Concrete Pour | By Jonathan Keller



Swinerton (**No. 30**) is general contractor on the 555 Bryant Street project in San Francisco, a 478,000-sq-ft, 16-story apartment building that is the firm’s largest self-perform job to date in northern California, it says. Swinerton’s concrete team executed a single phase pour of approximately 7,000 cu yd to complete the 6-ft-thick, 32,000-sq-ft mat slab for the footprint of the structure. Working between occupied residential buildings, the team coordinated 70 concrete trucks delivering to five concrete pumps, which poured about 460 cu yd per hour, and also handled the doors, frames, hardware, drywall and millwork scopes.

PHOTO COURTESY OF SWINERTON

# The Top 400 Dialogue

**In what ways would you say your company has evolved the most over the past year?**

**#291**  
on the  
Top 400 List



**ROBERT MELE, COO**  
**PLACE SERVICES INCORPORATED**  
Canton, Ga.

"Beyond infrastructure, one of our biggest successes has been expanding our service offerings. We've grown our architecture and engineering capacity, developed full design-build capabilities, and continued to scale our trade and general contracting divisions."

**#35**  
on the  
Top 400 List



**GABE RODRIGUEZ, VICE PRESIDENT**  
**BARTON MALOW**  
Southfield, Mich.

"Our firm has evolved significantly by becoming more attuned to external factors. As the market has become more volatile, we have proactively anticipated risks and stayed ahead of potential shifts to provide the most value to our clients."

**What investments have you made in your firm's safety program in the past few years?**

**#243**  
on the  
Top 400 List



**URAL YAL, CEO**  
**SHIMMICK**  
Irvine, Calif.

"We are embracing behavior-based safety programs where everyone on the jobsite is motivated to keep each other safe. It's also great to see topics such as heat illness, mental health and fall protection safety receiving more attention in the industry."

**#52**  
on the  
Top 400 List



**COREY KENNEDY, DIRECTOR, SAFETY DEV.**  
**ROBINS & MORTON**  
Birmingham, Ala.

"With a few years of data, we're now able to see areas of focus emerging for our teams. This proactive, systems-thinking approach to safety is directly aligned with our human performance operating philosophy, which has been in place for more than a decade."

and scheduling early in the process.”

Carline says she overcomes such challenges through a proactive data-driven approach.

“By leveraging real-time market insights, maintaining strong subcontractor partnerships and applying value engineering strategies, we identify cost-saving opportunities without compromising quality or schedule,” says Carline. “Just as important, we take the time to develop a deep understanding of our clients’ goals and maintain transparent communication throughout the process. This ensures every decision aligns with their priorities, resulting in smarter, more efficient project outcomes.”

DPR Construction CEO George Pfeffer says the No. 8-ranked firm’s preconstruction challenges are largely related to locking in the design for the production schedule.

“We have aggressive target end-dates and procurement requirements that require different design delivery models, Pfeffer says. “The size of some of our projects and the pace warrant an alternative to the typical schematic design, design development and construction documents.” He adds that the firm advocates for a more “targeted set of design deliverables.”

The CEO contends that this allows DPR Construction to focus on more immediate project requirements, such as site, foundations, structure, MEP and basis of design.

“We’ve realized many benefits from early alignment with owners and design teams regarding what we need and when we need it,” Pfeffer says. “It affects the schedule and allows some flexibility, especially in allowing the design team more time to consider key finish design that can be on a parallel path.”

Estimates are always a challenge in preconstruction, says Jason Henley, CEO of D.F. Chase Inc.

“Historically, the construction industry lags on new technology adoption, but once we have new artificial intelligence technologies in hand, they will allow us to do estimates much quicker with improved accuracy,” he says. “Currently, this technology is only about 80% accurate, but once it is fully developed, AI will make a huge impact on efficiency by cutting estimation time in half.”

### Harnessing Technology

Top 400 contractor executives named a variety of hardware and software technology investments they say are having an impact on their business operations and on their ability to do more with less labor.

“Technology is fundamentally transforming the construction industry, and we are fully embracing innovations that enhance efficiency, safety, and sustain-

### Turner Commits \$5M to Mental Health | By Emell D. Adolphus

Contracting giant Turner Construction Co. (**No. 1**) announced May 7 a \$5-million investment in mental health and well-being resources for its more than 13,000 employees. Launched in conjunction with its nonprofit, the Turner Foundation, the company says the funding will be allocated over a five-year period to support expansion and development of more mental health initiatives across its over 10,000 jobsites.

“We need more people to come into our industry, but we have to make construction attractive for them to come,” says longtime company executive Abrar Sheriff, who was named president of its new construction services business line last year and remains president and CEO of unit Turner International. Amid ongoing industry labor shortages, he calls investing in employee resources and development a crucial step to create a more welcoming environment for the next generation of skilled workers. “Construction is hard as is,” Sheriff says. “The biggest thing we feel as a company is creating the right environment where people feel respected.” Creating more avenues for employees to connect can have a big impact on improving collaboration, Sheriff adds.

“They are working, they are away from their families, a typical project lasts two years,” Sheriff says. “So we feel we have to make our sites more attractive, our industry more attractive.”

Turner is a founding member of Construction Inclusion Week with contractors Mortenson, McCarthy Building Cos., Clark Construction Group, Gilbane Building Co. and DPR Construction. Launched in 2020, the annual event promotes diversity, equity and inclusion across the AEC sector and shares strategies on workforce recruitment, retention and resource groups, among other initiatives. More than 3,000 companies have participated since its launch, and Sheriff says organizers expect more participants this year.

“In the next three to five years, we feel workforce needs are only going to increase,” Sheriff says. “As long as people come into our industry—that’s what matters. It doesn’t matter who they are working for. Everybody works together.”

In a press release announcing Turner’s mental health investment, Turner Chairman and CEO Peter Davoren said the firm is committed to building a workplace where “every team member feels safe and supported.” He added, “Mental health matters so much because it touches all of us—our families, our coworkers, our friends.

ability,” says Rebecca Cook, IT manager at Perlo Construction. “This is no longer something we can delay; it now drives our business forward.”

Ranked No. 292, the firm uses project management software to streamline “every aspect of our work”—from preconstruction to project closeout, helping the firm better integrate with all of its departments and collaborators, Cook says.

She adds that use of drones and aerial technology to survey and monitor projects, as well as security technologies and building information modeling (BIM), have become standard components of the firm’s services.

“By adopting these technologies, we improve our operational efficiency and position ourselves to meet the changing demands of the industry,” Cook says.

At Poettker Construction Co., the launch of a drone program has made a significant impact on the contractor’s risk management and efficiency processes, allow-

# The Top 100 Contractors by New Contracts

RANK 2025		NEW CONTRACTS IN \$ MIL.	RANK 2025		NEW CONTRACTS IN \$ MIL.	RANK 2025		NEW CONTRACTS IN \$ MIL.
1	TURNER CONSTRUCTION CO.	26,136.4	36	THE YATES COS. INC.	3,899.9	71	POWER CONSTRUCTION CO. LLC	1,813.1
2	STO BUILDING GROUP	17,844.0	37	EXYTE AMERICAS HOLDING INC.	3,842.8	72	FERROVIAL CONSTRUCTION	1,807.3
3	KIEWIT CORP.	16,837.0	38	FORTIS CONSTRUCTION	3,782.9	73	BRINKMANN CONSTRUCTORS	1,772.9
4	THE WHITING-TURNER CONTRACTING CO.	16,500.0	39	DRAGADOS	3,699.8	74	GEMMA POWER SYSTEMS	1,752.1
5	FLUOR	14,649.0	40	CLUNE CONSTRUCTION	3,464.0	75	COLAS INC.	1,736.6
6	MASTEC INC.	14,262.2	41	JT. MAGEN & CO. INC.	3,356.0	76	HANOVER CO.	1,709.0
7	TUTOR PERINI CORP.	12,842.4	42	THE PENTA BUILDING GROUP	3,163.4	77	F.H. PASCHEN	1,700.0
8	SKANSKA USA	12,502.6	43	BIG-D CONSTRUCTION	3,149.0	78	CADDELL CONSTRUCTION CO. LLC	1,686.2
9	PCL CONSTRUCTION ENTERPRISES INC.	12,234.3	44	HOFFMAN CONSTRUCTION	3,100.0	79	BARTON MALOW HOLDINGS LLC	1,680.8
10	HITT CONTRACTING	11,804.5	45	RYAN COS. US INC.	3,070.6	80	FERREIRA CONSTRUCTION CO. INC.	1,676.8
11	DPR CONSTRUCTION	11,641.7	46	CROSSLAND CONSTRUCTION CO. INC.	2,598.0	81	PJ DICK - TRUMBULL - LINDY GROUP	1,562.0
12	GILBANE BUILDING CO.	10,068.9	47	SOLV ENERGY	2,575.0	82	PEPPER CONSTRUCTION	1,558.0
13	HOLDER CONSTRUCTION	10,005.0	48	E. E. REED CONSTRUCTION	2,545.0	83	LEE LEWIS CONSTRUCTION INC.	1,500.0
14	CLARK GROUP	9,874.7	49	THE KOKOSING GROUP OF COS.	2,520.1	84	J.H. FINDORFF & SON INC.	1,487.0
15	MCCARTHY HOLDINGS INC.	9,849.5	50	MWH CONSTRUCTORS INC.	2,450.1	85	ALLAN MYERS	1,486.3
16	JE DUNN CONSTRUCTION CO.	9,550.0	51	GRANITE CONSTRUCTION	2,430.1	86	CHOATE CONSTRUCTION CO.	1,460.9
17	MORTENSON	9,078.3	52	MANHATTAN CONSTRUCTION GROUP	2,401.7	87	THE WEITZ CO.	1,457.6
18	CLAYCO	8,900.0	53	ROBINS & MORTON	2,400.0	88	BARTLETT COCKE GENERAL CONTRACTORS LLC	1,428.9
19	MCDERMOTT INTERNATIONAL	8,474.0	54	THE CHRISTMAN CO.	2,386.0	89	C.W. DRIVER COS.	1,424.4
20	HENSEL PHELPS	8,122.8	55	OKLAND CONSTRUCTION	2,347.0	90	BLACK & VEATCH	1,408.9
21	AUSTIN INDUSTRIES	7,900.0	56	EVANS GENERAL CONTRACTORS	2,300.0	91	STACY AND WITBECK INC.	1,400.0
22	BRASFIELD & GORRIE	7,117.4	57	FLATIRON CONSTRUCTION CORP.	2,298.5	92	AECOM	1,355.0
23	THE WALSH GROUP	7,000.5	58	MESSER CONSTRUCTION CO.	2,222.3	93	MIRON CONSTRUCTION CO. INC.	1,350.0
24	GRAY	6,341.2	59	PERFORMANCE CONTRACTORS INC.	2,207.0	94	HOAR CONSTRUCTION	1,339.0
25	BALFOUR BEATTY US	6,122.8	60	ADOLFSON & PETERSON CONSTRUCTION	2,138.0	95	ASRC INDUSTRIAL	1,333.0
26	SWINERTON INC.	6,100.0	61	WHARTON-SMITH INC.	2,120.1	96	THE CONLAN COMPANY	1,304.9
27	WALBRIDGE	6,049.3	62	GARNEY HOLDING CO.	2,008.0	97	JRM CONSTRUCTION MANAGEMENT	1,300.0
28	SUFFOLK CONSTRUCTION CO. INC.	5,767.1	63	MCGOUGH	2,000.0	98	OLTMANS CONSTRUCTION CO.	1,300.0
29	ALBERICI-FLINTCO	5,551.2	64	DEVCON CONSTRUCTION INC.	2,000.0	99	CLANCY & THEYS CONSTRUCTION CO.	1,292.9
30	HERZOG ENTERPRISES INC.	5,368.0	65	COASTAL CONSTRUCTION GROUP	2,000.0	100	APTIM	1,251.3
31	MICHELS	5,137.0	66	ESS COS.	1,940.9			
32	CONSIGLI BUILDING GROUP INC.	5,052.0	67	CONSTRUCTION PARTNERS INC.	1,892.0			
33	MOSS	4,821.6	68	AMES CONSTRUCTION INC.	1,832.8			
34	BECHTEL	4,798.0	69	HARVEY CLEARY	1,830.0			
35	SUNDT CONSTRUCTION INC.	4,225.2	70	SHAWMUT DESIGN AND CONSTRUCTION	1,824.0			

ing it to perform inspections and identify hazards from the air without the need to have additional labor resources.

“As drone use in our company increases, so will the quality of work. We have a fleet of various models, all with different capabilities that cater to the specific needs of a project,” says CEO Keith Poettker. These include thermal scans, topographical information and aerial photography.

“This robust technology is a significant asset to our service offerings and in-house capabilities,” Poettker points out.

With AI added, drones can flag potential project

## On the Web

For expanded content on ENR's Top Lists, see [ENR.com/toplists](https://enr.com/toplists).

barriers or easily measure stockpile quantities, the CEO explains. “Customers benefit from the technology as well by monitoring the progress of their project virtually.

According to Matt Agner, No. 173-ranked Rodgers Builders executive vice president, virtual reality is helping its clients and end users better visualize their spaces early on.

“This leads to fewer usability-related changes during construction, reducing rework and saving costs,” the executive explains. “We’re also seeing strong results from data analytics tools that pull from multiple sources to create visual and insight-rich dashboards.”

# The Top 50 Contractors Working Abroad

RANK 2025		REVENUE IN \$ MIL.	RANK 2025		REVENUE IN \$ MIL.	RANK 2025		REVENUE IN \$ MIL.
1	MCDERMOTT INTERNATIONAL	6,816.0	18	GILBANE BUILDING CO.	279.7	35	ORION GROUP HOLDINGS INC.	59.1
2	FLUOR	5,810.1	19	BURNS & MCDONNELL	277.4	36	THE BECK GROUP	54.2
3	PCL CONSTRUCTION ENTERPRISES INC.	4,262.8	20	RAILWORKS	230.1	37	RONCELLI INC.	53.0
4	BECHTEL	3,694.0	21	ECC	227.7	38	MATRIX SERVICE CO.	51.1
5	ALBERICI-FLINTCO	1,479.2	22	APTIM	199.5	39	HERZOG ENTERPRISES INC.	49.0
6	HOFFMAN CONSTRUCTION	1,477.0	23	WALBRIDGE	181.7	40	TRAYLOR CONSTRUCTION GROUP INC.	47.2
7	KIEWIT CORP.	1,244.5	24	FLATIRON CONSTRUCTION CORP.	177.4	41	COMMERCIAL CONTRACTING CORP.	41.8
8	STO BUILDING GROUP	915.0	25	DPR CONSTRUCTION	170.2	42	IPS-INTEGRATED PROJECT SERVICES LLC	35.5
9	DRAGADOS	828.3	26	MASTEC INC.	147.7	43	DAY & ZIMMERMANN	27.5
10	BL HARBERT INTERNATIONAL	661.4	27	LANE INDUSTRIES INC.	147.5	44	DENNIS GROUP	24.1
11	TURNER CONSTRUCTION CO.	591.9	28	PARSONS CORP.	143.5	45	MWH CONSTRUCTORS INC.	21.3
12	TUTOR PERINI CORP.	583.4	29	BARNARD CONSTRUCTION CO. INC.	133.3	46	PRIMUS	20.0
13	FORTIS CONSTRUCTION	516.1	30	BARTON MALOW HOLDINGS LLC	107.7	47	GRAY	15.1
14	BLACK & VEATCH	404.9	31	T N WARD CO.	80.7	48	ARCO CONSTRUCTION COS.	10.7
15	CADDELL CONSTRUCTION CO. LLC	385.0	32	CONSIGLI BUILDING GROUP INC.	77.0	49	POND AND CO.	8.4
16	HASKELL	346.0	33	THE WEITZ CO.	66.5	50	JINGOLI - DCO	4.6
17	MICHELS	285.3	34	THE WALSH GROUP	59.5			

FIRMS ARE RANKED BY INTERNATIONAL REVENUE.

He emphasizes that “these tools reduce the need for static reports and help teams make faster, more informed decisions.”

Swinerton Director of Innovation Aaron Anderson expects technology adoption to rapidly advance as more applications used by companies integrate AI. The firm is ranked No. 30.

“The outlook for deciding our own strategic direction and then teaching these tools to execute is helping to grow their acceptance,” Anderson says. “Modeling details, determining scope for buyouts and adapting schedules inside contract constraints are just a few of the amazing, emerging capabilities” in developing industry technology.

Mortenson, ranked No. 22 on this year’s Top 400, has integrated technology to improve productivity across its jobsites. “We’re seeing the advancement of industrialization—particularly in our solar energy and data center projects, which is having a big impact on our business,” says Executive Vice President Maja Rosenquist.

She adds that there is not a singular technology having an impact on the company—but rather “the aggregation of technologies coming together that’s allowing us to standardize tasks, automate work activities and drive lean practices that focus on schedule optimization.”

Rosenquist says Mortenson has also adopted use of drones and GIS, “which is having a significant impact on our civil business.”

## Leveraging Labor Resources

Top 400 firms say they expect last year’s challenges to carry over into this year, with many amplified by dwindling labor pools and availability.

“Labor scarcity can impact our ability to scale quickly, meet aggressive schedules and deliver the level of quality we expect on every job,” says Rick Davenport, president and COO of Samet Corp. “This challenge is not unique to us—it’s systemic in the AEC industry.”

In response, the firm is doubling down on proposed solutions, such as investing in workforce development and supervision, he says, “ensuring we have well-trained, engaged field leaders who can support our teams and trade partners,” and on evolving firm culture to prioritize trade appreciation and worker welfare.

According to Davenport, that includes “everything



**“Labor scarcity can impact our ability to scale quickly, meet aggressive schedules and deliver the level of quality we expect.”**

—Rick Davenport, President, Samet Corp.

# The Top 50 Domestic Heavy Contractors

RANK 2025	FIRM	REVENUE IN \$ MIL.	% OF TOTAL REVENUE			
			TRANSPORTATION	SEWER	HAZARDOUS WASTE	WATER
1	KIEWIT CORP.	6,000.1	32	7	0	7
2	THE WALSH GROUP	4,630.8	43	10	0	8
3	GRANITE CONSTRUCTION	3,267.3	68	3	0	10
4	DRAGADOS	3,178.4	87	6	0	4
5	HENSEL PHELPS	2,847.5	32	3	0	0
6	SKANSKA USA	2,713.6	31	1	0	0
7	FLATIRON CONSTRUCTION CORP.	2,402.6	88	8	0	4
8	COLAS INC.	2,370.1	100	0	0	0
9	CLARK GROUP	2,369.8	31	3	0	1
10	AECOM	2,119.8	26	0	0	0
11	FERROVIAL CONSTRUCTION	2,025.3	82	14	0	0
12	GARNEY HOLDING CO.	1,988.0	0	43	0	57
13	TUTOR PERINI CORP.	1,873.6	48	0	0	0
14	BECHTEL	1,836.0	0	0	15	0
15	CONSTRUCTION PARTNERS INC.	1,823.9	100	0	0	0
16	FLUOR	1,671.7	19	0	13	0
17	MASTEC INC.	1,476.4	10	2	0	1
18	TURNER CONSTRUCTION CO.	1,474.6	8	0	0	0
19	THE KOKOSING GROUP OF COS.	1,473.7	40	8	0	3
20	ALLAN MYERS	1,468.1	87	10	0	4
21	AMES CONSTRUCTION INC.	1,343.9	57	0	1	9
22	SUNDT CONSTRUCTION INC.	1,264.2	13	22	0	6
23	OHLA USA INC.	1,248.0	89	3	0	4
24	VINCI CONSTRUCTION USA	1,242.3	100	0	0	0
25	LANE INDUSTRIES INC.	1,194.8	88	2	0	10
26	HERZOG ENTERPRISES INC.	1,165.0	97	3	0	0
27	AUSTIN INDUSTRIES	1,023.7	21	0	0	0
28	HOLDER CONSTRUCTION	987.0	12	0	0	0
29	TEICHERT CONSTRUCTION	923.4	75	0	0	6
30	PCL CONSTRUCTION ENTERPRISES INC.	890.7	5	1	0	15
31	PJ DICK - TRUMBULL - LINDY GROUP	849.7	61	1	0	0
32	LAS VEGAS PAVING CORP.	818.0	100	0	0	0
33	ESS COS.	812.8	49	10	0	6
34	WILLIAMS BROTHERS CONSTRUCTION	792.6	100	0	0	0
35	ANDERSON COLUMBIA CO. INC.	783.0	77	0	0	0
36	BALFOUR BEATTY US	771.3	15	0	0	1
37	GREAT LAKES DREDGE & DOCK CO.	762.7	100	0	0	0
38	TRAYLOR CONSTRUCTION GROUP INC.	752.0	42	8	0	15
39	RAILWORKS	746.6	90	0	0	0
40	MICHELS	707.1	11	3	0	5
41	BARNARD CONSTRUCTION CO. INC.	687.5	22	1	0	47
42	MCCARTHY HOLDINGS INC.	682.6	5	5	0	0
43	ALBERICI-FLINTCO	667.4	7	10	0	6
44	MWH CONSTRUCTORS INC.	665.3	0	64	0	27
45	ECC	636.5	18	55	5	9
46	SUPERIOR CONSTRUCTION HOLDING CO. INC.	629.6	94	0	0	0
47	F.H. PASCHEN	626.8	61	0	0	3
48	WHARTON-SMITH INC.	604.0	0	44	0	8
49	IOVINO ENTERPRISES	593.0	77	3	0	0
50	ZACHRY CONSTRUCTION CORP.	583.0	94	0	0	2

FIRMS ARE RANKED BY THE TOTAL REVENUE FROM DOMESTIC MARKETS THAT INVOLVE PRIMARILY EARTHMOVING AND RELATED SKILLS, AND ARE PRIMARILY PUBLICLY FUNDED.

from recognition programs to building covered wellness areas on the jobsite where our trade partners can take breaks from the heat, warm their food and have a clean place to sit and enjoy their lunch.”

The Trump administration crackdown on undocumented U.S. workers and its immigration policies more generally have added to labor pressures for some Top 400 firms as they look to recruit and retain talent internationally.

“We’re closely monitoring labor and immigration changes as they directly impact our workforce,” says Vincent Lai, vice president of estimating at Bernards. “Our proactive approach includes mentorship, training programs, competitive wages and fostering a diverse and inclusive workplace. These efforts help us retain and grow talent while preparing for future shifts in workforce policy.”

Q&D Construction CEO Lance Semenko thinks the company’s internal training center will be a game-changer for how its employees gain new skills and are promoted through the ranks.

As for Trump’s crackdown on undocumented workers, he says: “For us this is not going to affect the workforce as all our employees have to be vetted for the right documentation of being legal citizens.”

Shifts in labor and immigration policies will continue to shape workforce availability across the construction industry, predicts Moss CEO Scott Moss, “especially in sectors like utility-scale solar, where demand is rapidly increasing and there is a huge need for skilled labor.”

To address such challenges, Moss says the company has launched a first-of-its-kind solar apprenticeship program in partnership with the Florida Dept. of Education, a two-year program that includes hands-on training, technical instruction and a focus on leadership and communication.

Graduate solar installers earn a nationally recognized certificate, Moss notes, adding that the accreditation has expanded benefits for hourly employees.

“Together, these efforts strengthen our workforce and help ensure Moss is ready to meet the demands of a changing labor landscape,” says Moss. The firm is ranked No. 41.

## Innovating Under Pressure

In the face of market challenges, Top 400 firms say shifting market conditions have been an opportunity for them to innovate operations and hone the work they do best.

Knutson, ranked No. 263, says it secured notable projects in the education and health care sectors over the past year came by “concentrating our efforts in

# The Top 50 in Domestic Building/Mfg. Revenue

RANK		FIRM	REVENUE	RANK		FIRM	REVENUE	RANK		FIRM	REVENUE
2025	2024		IN \$ MIL.	2025	2024		IN \$ MIL.	2025	2024		IN \$ MIL.
1	1	TURNER CONSTRUCTION CO.	13,901.3	18	16	BALFOUR BEATTY US	3,997.1	35	**	EVANS GENERAL CONTRACTORS	2,036.0
2	3	THE WHITING-TURNER CONTRACTING CO.	9,693.8	19	19	HENSEL PHELPS	3,880.4	36	30	HITT CONTRACTING	1,915.1
3	2	STO BUILDING GROUP	9,543.0	20	22	CONSIGLI BUILDING GROUP INC.	3,688.0	37	**	GRAY	1,885.7
4	6	GILBANE BUILDING CO.	6,376.8	21	20	HOFFMAN CONSTRUCTION	3,604.3	38	42	E. E. REED CONSTRUCTION	1,823.0
5	9	AECOM	5,277.7	22	21	AUSTIN INDUSTRIES	3,299.5	39	50	OKLAND CONSTRUCTION	1,802.0
6	7	JE DUNN CONSTRUCTION CO.	5,270.0	23	24	CLAYCO	2,822.0	40	34	HARVEY CLEARY	1,782.0
7	4	ARCO CONSTRUCTION COS.	5,146.7	24	29	ROBINS & MORTON	2,525.3	41	35	BIG-D CONSTRUCTION	1,776.0
8	11	DPR CONSTRUCTION	5,046.7	25	23	RYAN COS. US INC.	2,359.9	42	36	THE WALSH GROUP	1,739.2
9	8	SUFFOLK CONSTRUCTION CO. INC.	4,575.1	26	49	EXYTE AMERICAS HOLDING INC.	2,326.1	43	**	ARISTEO CONSTRUCTION CO.	1,726.1
10	12	THE YATES COS. INC.	4,533.0	27	28	PCL CONSTRUCTION ENTERPRISES INC.	2,278.4	44	**	BECHTEL	1,654.0
11	15	SKANSKA USA	4,447.5	28	37	F.A. WILHELM CONSTRUCTION CO. INC.	2,204.0	45	25	ALSTON CONSTRUCTION CO. INC.	1,613.0
12	10	WALBRIDGE	4,343.0	29	40	CROSSLAND CONSTRUCTION CO. INC.	2,192.0	46	**	THE CHRISTMAN CO.	1,587.0
13	13	BRASFIELD & GORRIE	4,331.2	30	27	ALBERICI-FLINTCO	2,154.6	47	**	THE RUDOLPH LIBBE GROUP	1,530.0
14	18	SWINERTON INC.	4,234.6	31	32	MORTENSON	2,119.7	48	43	MOSS	1,515.7
15	17	MCCARTHY HOLDINGS INC.	4,149.7	32	45	SHAWMUT DESIGN AND CONSTRUCTION	2,065.9	49	41	PEPPER CONSTRUCTION	1,505.4
16	14	CLARK GROUP	4,141.1	33	26	TUTOR PERINI CORP.	2,049.3	50	33	CHOATE CONSTRUCTION CO.	1,486.2
17	5	BARTON MALOW HOLDINGS LLC	4,045.1	34	39	CORE CONSTRUCTION GROUP	2,042.8				

FIRMS ARE RANKED BY TOTAL REVENUE FROM DOMESTIC GENERAL BUILDING AND MANUFACTURING.

markets where we excel.”

Joeris General Contractors President Burton Hackney says the firm has been able to scale operations while maintaining its culture and talent. “Through highly intentional talent development initiatives and leadership mentoring programs, we’ve successfully preserved our collaborative, client-focused culture,” he adds. The firm is ranked No. 113 this year.

Jim Radich, Granite Construction chief operating officer and executive vice president, says the firm has had numerous projects on which it has been able to bake innovations into the design and permitting stages to reduce risk and save time and money. The company, ranked No. 39, says it is continuing to focus

on early contractor involvement and qualifications-based selection procurement.

“All markets are facing ongoing uncertainty around geopolitical issues, tariffs, interest rates supply chain disruptions, and labor constraints,” says William (Bill) H. Goodrich, Chairman and CEO of LeChase Construction Services LLC. “Rather than take an alarmist view, we choose to be realistic and responsive in how we navigate the challenges,” he point out.

As the No. 128-ranked company did during the COVID-19 pandemic, Goodrich says it is using this period of uncertainty to deepen its partnerships.

He adds, “We remain confident in our ability to adapt and support our clients through whatever comes next.” ■

## How To Read the Tables

**Companies** are ranked by construction revenue in 2024 in (\$ millions). Those with subsidiaries (†) are listed by company rank, which may be found on the ENR website at [www.ENR.com](http://www.ENR.com). Firms not ranked last year are designated as \*\*. Some markets may not add up to 100% due to omission of the “other” miscellaneous market category. NA = “not available.”

**Figures** include prime construction contracts, shares of joint ventures, subcontracts, the construction portion of design-construct contracts and construction management-at-risk contracts when the firm’s risks are similar to those of a general contractor. Figures also include the value of installed equipment when a firm has prime responsibility for specifying and procuring it within the scope of its construction contract.

**General Building** includes commercial buildings, offices, stores, educational facilities, government buildings, hospitals, medical facilities, hotels, apartments, housing, etc.

**Manufacturing** includes auto assembly, electronic assembly, textile plants, etc.

**Power** includes thermal and hydroelectric power plants, waste-to-energy plants, transmission lines, substations, cogeneration plants, etc.

**Water Supply** includes dams, reservoirs, transmission pipelines, distribution mains, irrigation canals, desalination and potability treatment plants, pumping stations, etc.

**Sewerage / Solid Waste** includes sanitary and storm sewers, treatment plants, pumping plants, incinerators, industrial waste facilities, etc.

**Industrial Process** includes pulp and paper mills, steel mills, non-ferrous metal refineries, pharmaceutical plants, chemical plants, food and other processing plants, etc.

**Petroleum** includes refineries, petrochemical plants, offshore facilities, pipelines, etc.

**Transportation** includes airports, bridges, roads, canals, locks, dredging, marine facilities, piers, railroads, tunnels, etc.

**Hazardous Waste** includes chemical and nuclear waste treatment, asbestos and lead abatement, etc.

**Telecommunications** includes transmission lines and cabling, towers and antennae, data centers and web hotels, etc.

RANK 2025	RANK 2024	FIRM	2024 REVENUE (\$ MIL)		2024 NEW CONTRACTS	GENERAL BUILDING	MANUFACTURING	POWER	WATER / SEWER / WASTE	INDUS. / PETROLEUM	TRANSPORTATION	HAZARDOUS WASTE	TELECOM	% CM-AT-RISK
			TOTAL	INT'L										
1	1	TURNER CONSTRUCTION CO., New York, N.Y.†	20,241.4	591.9	26,136.4	60	12	0	0	4	7	0	18	95
2	3	BECHTEL, Reston, Va.†	15,941.0	3,694.0	4,798.0	0	10	16	0	52	10	12	1	9
3	2	KIEWIT CORP., Omaha, Neb.†	14,036.9	1,244.5	16,837.0	7	0	31	15	13	33	0	1	17
4	5	THE WHITING-TURNER CONTRACTING CO., Baltimore, Md.	13,311.8	0.0	16,500.0	70	3	0	0	5	2	0	19	74
5	4	MASTEC INC., Coral Gables, Fla.†	12,303.5	147.7	14,262.2	0	0	45	3	19	9	0	23	0
6	6	STO BUILDING GROUP, New York, N.Y.†	12,038.0	915.0	17,844.0	85	0	0	0	4	0	0	11	80
7	8	FLUOR, Irving, Texas†	11,131.4	5,810.1	14,649.0	8	6	2	0	62	12	6	0	0
8	7	DPR CONSTRUCTION, Redwood City, Calif.†	10,839.8	170.2	11,641.7	42	5	0	0	19	0	0	34	84
9	9	MCDERMOTT INTERNATIONAL, Houston, Texas†	8,911.0	6,816.0	8,474.0	0	0	0	0	100	0	0	0	0
10	26	HITT CONTRACTING, Falls Church, Va.	8,658.4	0.0	11,804.5	22	0	0	0	0	0	0	78	100
11	10	PCL CONSTRUCTION ENTERPRISES INC., Denver, Colo.†	8,288.6	4,262.8	12,234.3	61	0	11	10	8	8	0	1	43
12	12	SKANSKA USA, New York, N.Y.†	8,234.6	0.0	12,502.6	47	7	0	2	0	31	0	12	49
13	13	HENSEL PHELPS, Greeley, Colo.	8,153.3	0.0	8,122.8	43	4	0	3	0	32	0	17	45
14	14	AECOM, Dallas, Texas	8,093.9	1.1	1,355.0	65	0	2	0	0	26	0	7	76
15	30	HOLDER CONSTRUCTION, Atlanta, Ga.	8,077.0	0.0	10,005.0	5	0	0	0	0	12	0	83	97
16	15	THE WALSH GROUP, Chicago, Ill.	7,690.6	59.5	7,000.5	23	0	0	17	0	43	0	16	11
17	11	GILBANE BUILDING CO., Providence, R.I.†	7,468.9	279.7	10,068.9	81	7	0	0	8	3	0	2	75
18	18	JE DUNN CONSTRUCTION CO., Kansas City, Mo.	7,428.0	0.0	9,550.0	59	11	0	0	2	3	0	24	83
19	16	CLARK GROUP, McLean, Va.	7,020.7	0.0	9,874.7	59	0	1	3	0	31	0	7	46
20	20	MCCARTHY HOLDINGS INC., St. Louis, Mo.†	6,980.8	0.0	9,849.5	59	0	20	5	2	5	0	9	68
21	23	CLAYCO, Chicago, Ill.†	6,840.0	0.0	8,900.0	20	21	3	0	8	0	0	48	0
22	27	MORTENSON, Minneapolis, Minn.†	6,692.4	0.0	9,078.3	28	4	41	0	0	1	0	26	51
23	22	BRASFIELD & GORRIE, Birmingham, Ala.	6,367.5	0.0	7,117.4	61	7	1	3	3	2	0	23	9
24	21	WALBRIDGE, Detroit, Mich.	6,100.0	181.6	6,049.3	3	71	1	0	1	0	0	24	62
25	28	ZACHRY GROUP, San Antonio, Texas†	5,932.5	0.0	421.9	0	0	9	0	91	0	0	0	0
26	24	HOFFMAN CONSTRUCTION, Lake Oswego, Ore.	5,382.0	1,477.0	3,100.0	8	87	0	1	0	4	0	0	13
27	29	THE YATES COS. INC., Philadelphia, Miss.†	5,370.1	0.0	3,899.9	25	60	0	0	10	4	0	1	39
28	25	SUFFOLK CONSTRUCTION CO. INC., Boston, Mass.†	5,330.4	0.0	5,767.1	86	0	0	0	0	6	0	8	100
29	17	ARCO CONSTRUCTION COS., St. Louis, Mo.	5,196.9	10.7	647.6	88	11	0	0	1	0	0	0	0
30	35	SWINERTON INC., Concord, Calif.	4,848.1	0.0	6,100.0	87	0	3	0	0	8	0	2	61
31	33	AUSTIN INDUSTRIES, Dallas, Texas	4,843.9	0.0	7,900.0	16	52	0	0	11	21	0	0	12
32	32	BALFOUR BEATTY US, Dallas, Texas†	4,768.5	0.0	6,122.8	83	0	0	1	0	15	0	0	68
33	31	TUTOR PERINI CORP., Sylmar, Calif.†	4,506.3	583.4	12,842.4	51	0	0	0	0	49	0	0	0
34	36	ALBERICI-FLINTCO, St. Louis, Mo.†	4,452.4	1,479.2	5,551.2	47	26	1	11	10	5	0	0	50
35	19	BARTON MALOW HOLDINGS LLC, Southfield, Mich.†	4,449.5	107.7	1,680.8	37	54	8	0	0	0	0	0	31
36	40	GRAY, Lexington, Ky.†	4,154.2	15.1	6,341.2	3	42	0	0	25	0	0	30	36
37	37	DRAGADOS, New York, N.Y.†	4,136.5	828.3	3,699.8	1	0	0	9	2	86	0	0	0
38	34	MICHELS, Brownsville, Wis.†	4,078.6	285.3	5,137.0	9	0	43	10	24	10	0	3	0
39	39	GRANITE CONSTRUCTION, Watsonville, Calif.†	4,007.6	0.2	2,430.1	9	0	3	14	0	68	0	0	3
40	43	CONSIGLI BUILDING GROUP INC., Milford, Mass.†	3,765.0	77.0	5,052.0	100	0	0	0	0	0	0	0	84
41	41	MOSS, Fort Lauderdale, Fla.	3,709.6	0.0	4,821.6	41	0	58	0	0	1	0	0	100
42	38	BURNS & MCDONNELL, Kansas City, Mo.†	3,511.4	277.4	NA	2	4	53	1	33	4	1	1	0
43	42	RYAN COS. US INC., Minneapolis, Minn.	3,449.0	0.0	3,070.6	68	0	0	0	4	0	0	27	2
44	45	TURNER INDUSTRIES GROUP LLC, Baton Rouge, La.†	3,214.8	0.0	608.0	0	0	1	0	98	0	1	0	0
45	44	BLACK & VEATCH, Overland Park, Kan.†	3,115.4	404.9	1,408.9	0	0	79	4	10	0	0	7	15
46	51	SUNDT CONSTRUCTION INC., Tempe, Ariz.	3,090.6	0.0	4,225.2	14	14	18	28	0	13	0	13	36
47	**	PERFORMANCE CONTRACTORS INC., Baton Rouge, La.	3,002.0	0.0	2,207.0	0	7	2	0	91	0	0	0	0
48	46	BIG-D CONSTRUCTION, Salt Lake City, Utah†	2,923.0	0.0	3,149.0	61	0	0	1	8	11	0	15	81
49	50	THE KOKOSING GROUP OF COS., Westerville, Ohio†	2,878.2	0.0	2,520.1	10	25	2	11	5	40	0	2	32
50	55	CROSSLAND CONSTRUCTION CO. INC., Columbus, Kan.	2,611.0	0.0	2,598.0	82	2	1	9	0	6	0	0	42

ESS COS. will be working on the \$600-million I-70 project for MoDOT, the largest construction project in the agency's history, the firm says.

RANK 2025	RANK 2024	FIRM	2024 REVENUE (\$ MIL)		2024 NEW CONTRACTS	GENERAL BUILDING	MANUFACTURING	POWER	WATER / SEWER / WASTE	INDUS. / PETROLEUM	TRANSPORTATION	HAZARDOUS WASTE	TELECOM	% CM-AT-RISK
			TOTAL	INT'L										
51	49	FLATIRON CONSTRUCTION CORP., Broomfield, Colo.†	2,590.3	177.4	2,298.5	0	0	0	13	0	86	0	0	0
52	56	ROBINS & MORTON, Birmingham, Ala.	2,545.6	0.0	2,400.0	99	0	0	0	0	1	0	0	58
53	75	EXYTE AMERICAS HOLDING INC., Richardson, Texas†	2,399.0	0.0	3,842.8	0	97	0	0	3	0	0	0	1
54	54	F.A. WILHELM CONSTRUCTION CO. INC., Indianapolis, Ind.†	2,384.0	0.0	1,000.0	77	15	1	4	1	2	0	0	43
55	47	COLAS INC., Morristown, N.J.†	2,370.1	0.0	1,736.6	0	0	0	0	0	100	0	0	0
56	57	EVANS GENERAL CONTRACTORS, Alpharetta, Ga.	2,300.0	0.0	2,300.0	48	41	0	0	0	0	0	7	0
57	70	FORTIS CONSTRUCTION, Portland, Ore.	2,243.9	516.1	3,782.9	12	0	0	0	0	0	0	88	86
58	53	CLUNE CONSTRUCTION, Chicago, Ill.	2,238.0	0.0	3,464.0	42	0	0	0	0	1	0	57	76
59	69	HASKELL, Jacksonville, Fla.†	2,194.3	346.0	NA	19	9	0	16	50	0	0	6	0
60	61	FERROVIAL CONSTRUCTION, Austin, Texas†	2,124.2	0.0	1,807.3	0	0	5	14	0	82	0	0	3
61	74	SHAWMUT DESIGN AND CONSTRUCTION, Boston, Mass.	2,065.9	0.0	1,824.0	100	0	0	0	0	0	0	0	100
62	66	CORE CONSTRUCTION GROUP, Frisco, Texas	2,042.8	0.0	NA	100	0	0	0	0	0	0	0	76
63	62	AMES CONSTRUCTION INC., Burnsville, Minn.	2,005.2	0.0	1,832.8	0	9	3	9	0	57	1	5	19
64	64	GARNEY HOLDING CO., North Kansas City, Mo.†	1,988.0	0.0	2,008.0	0	0	0	100	0	0	0	0	42
65	95	DAY & ZIMMERMANN, Philadelphia, Pa.†	1,956.0	27.5	NA	2	18	78	0	3	0	0	0	0
66	**	SOLV ENERGY, San Diego, Calif.†	1,892.0	0.0	2,575.0	0	0	100	0	0	0	0	0	0
67	68	J.T. MAGEN & CO. INC., New York, N.Y.	1,888.0	0.0	3,356.0	69	0	0	0	0	0	0	31	70
68	81	CONSTRUCTION PARTNERS INC., Dothan, Ala.†	1,823.9	0.0	1,892.0	0	0	0	0	0	100	0	0	0
69	72	E. E. REED CONSTRUCTION, Sugar Land, Texas†	1,823.0	0.0	2,545.0	100	0	0	0	0	0	0	0	0
70	83	OKLAND CONSTRUCTION, Salt Lake City, Utah†	1,815.0	0.0	2,347.0	80	19	0	0	0	0	0	1	86
71	67	MANHATTAN CONSTRUCTION GROUP, Tulsa, Okla.†	1,801.8	2.2	2,401.7	68	0	0	0	2	25	0	5	65
72	60	HARVEY CLEARY, Houston, Texas	1,782.0	0.0	1,830.0	100	0	0	0	0	0	0	0	72
73	154	ARISTEO CONSTRUCTION CO., Livonia, Mich.	1,748.1	0.0	NA	1	98	1	0	0	0	0	0	3
74	71	MIRON CONSTRUCTION CO. INC., Neenah, Wis.	1,746.3	0.0	1,350.0	56	1	5	2	34	2	0	0	62
75	87	THE CHRISTMAN CO., Lansing, Mich.†	1,731.0	0.0	2,386.0	88	4	0	2	0	3	0	3	70
76	86	THE RUDOLPH LIBBE GROUP, Walbridge, Ohio†	1,731.0	0.0	857.0	3	85	1	0	8	0	0	0	0
77	63	PEPPER CONSTRUCTION, Chicago, Ill.†	1,649.1	0.0	1,558.0	91	0	3	0	0	0	0	6	83
78	85	THE WEITZ CO., Des Moines, Iowa†	1,643.7	66.5	1,457.6	25	7	0	0	12	13	0	43	45
79	82	MESSER CONSTRUCTION CO., Cincinnati, Ohio†	1,623.2	0.0	2,222.3	78	4	0	0	13	5	0	0	71
80	48	ALSTON CONSTRUCTION CO. INC., Atlanta, Ga.	1,613.0	0.0	970.0	100	0	0	0	0	0	0	0	0
81	93	BL HARBERT INTERNATIONAL, Birmingham, Ala.	1,595.0	661.4	1,131.6	90	6	0	0	3	0	0	0	0
82	52	CHOATE CONSTRUCTION CO., Atlanta, Ga.	1,588.0	0.0	1,460.9	83	11	0	0	4	0	0	3	0
83	84	THE CONLAN COMPANY, Marietta, Ga.	1,542.1	0.0	1,304.9	95	0	0	0	1	0	0	4	0
84	97	NABHOLZ CONSTRUCTION CORP., Conway, Ark.	1,528.0	0.0	NA	84	8	0	0	0	6	0	2	0
85	100	DEPCOM POWER, Scottsdale, Ariz.	1,488.5	0.0	1,176.7	0	0	100	0	0	0	0	0	0
86	98	ALLAN MYERS, Worcester, Pa.	1,468.1	0.0	1,486.3	0	0	0	13	0	87	0	0	0
87	73	BRINKMANN CONSTRUCTORS, Chesterfield, Mo.	1,376.6	0.0	1,772.9	87	9	0	0	0	0	0	0	21
88	92	PJ DICK - TRUMBULL - LINDY GROUP, Pittsburgh, Pa.†	1,366.0	0.0	1,562.0	38	0	0	1	0	61	0	0	9
89	138	COASTAL CONSTRUCTION GROUP, Miami, Fla.†	1,351.0	0.0	2,000.0	100	0	0	0	0	0	0	0	100
90	121	FERREIRA CONSTRUCTION CO. INC., Branchburg, N.J.†	1,350.8	0.0	1,676.8	2	0	63	6	5	16	0	0	0
91	135	HOAR CONSTRUCTION, Birmingham, Ala.	1,350.7	0.0	1,339.0	100	0	0	0	0	0	0	0	98
92	79	POWER CONSTRUCTION CO. LLC, Chicago, Ill.†	1,343.3	0.0	1,813.1	80	0	0	1	14	3	0	2	78
93	104	LANE INDUSTRIES INC., Charlotte, N.C.†	1,342.3	147.5	1,038.8	0	0	11	11	0	78	0	0	0
94	108	THE CIAMBRO COS., Pittsfield, Maine†	1,342.0	0.0	859.0	13	13	26	0	21	25	0	0	16
95	76	THE BOLDT CO., Appleton, Wis.	1,338.9	0.0	NA	42	16	10	0	25	0	0	6	55
96	91	ADOLFSON & PETERSON CONSTRUCTION, Bloomington, Minn.†	1,329.0	0.0	2,138.0	91	0	0	9	0	0	0	0	85
97	129	CADDELL CONSTRUCTION CO. LLC, Montgomery, Ala.	1,326.6	385.0	1,686.2	96	0	0	0	0	0	0	4	18
98	65	HUNTER ROBERTS CONSTRUCTION GROUP LLC, New York, N.Y.	1,321.0	0.0	1,072.6	100	0	0	0	0	0	0	0	93
99	89	SAMET CORP., Greensboro, N.C.†	1,309.0	0.0	269.6	100	0	0	0	0	0	0	0	50
100	78	HATHAWAY DINWIDDIE CONSTRUCTION CO., San Francisco, Calif.	1,306.0	0.0	675.0	99	0	0	0	1	0	0	0	100

RANK 2025	RANK 2024	FIRM	2024 REVENUE (\$ MIL)		2024 NEW CONTRACTS	GENERAL BUILDING	MANUFACTURING	POWER	WATER / SEWER / WASTE	INDUS. / PETROLEUM	TRANSPORTATION	HAZARDOUS WASTE	TELECOM	% CM-AT-RISK
			TOTAL	INT'L										
101	109	OHLA USA INC., East Elmhurst, N.Y.†	1,305.0	0.0	1,212.0	4	0	0	7	0	89	0	0	4
102	106	THE PENTA BUILDING GROUP, Las Vegas, Nev.†	1,302.0	0.0	3,163.4	100	0	0	0	0	0	0	0	92
103	118	JRM CONSTRUCTION MANAGEMENT, New York, N.Y.	1,300.0	0.0	1,300.0	100	0	0	0	0	0	0	0	23
104	77	FCL BUILDERS, Itasca, Ill.	1,300.0	0.0	950.0	78	3	0	0	13	0	0	5	0
105	102	BNBUILDERS, Seattle, Wash.	1,300.0	0.0	105.0	100	0	0	0	0	0	0	0	0
106	58	DEVCON CONSTRUCTION INC., Milpitas, Calif.	1,268.0	0.0	2,000.0	100	0	0	0	0	0	0	0	0
107	101	W.E. O'NEIL CONSTRUCTION CO., Chicago, Ill.†	1,260.0	0.0	1,086.0	82	2	0	0	0	15	0	0	78
108	125	BARTLETT COCKE GENERAL CONTRACTORS LLC, San Antonio, Texas†	1,244.0	0.0	1,428.9	90	0	0	0	0	0	0	10	98
109	119	ESS COS., Columbia, Mo.†	1,243.2	0.0	1,940.9	31	2	1	16	0	49	0	0	12
110	112	VINCI CONSTRUCTION USA, Winter Park, Fla.†	1,242.3	0.0	1,140.6	0	0	0	0	0	100	0	0	0
111	122	TRAYLOR CONSTRUCTION GROUP INC., Evansville, Ind.	1,214.9	47.2	869.1	1	1	23	26	7	40	0	0	0
112	113	HERZOG ENTERPRISES INC., St. Joseph, Mo.†	1,214.0	49.0	5,368.0	0	0	0	3	0	97	0	0	0
113	117	JOERIS GENERAL CONTRACTORS, San Antonio, Texas	1,211.0	0.0	956.0	100	0	0	0	0	0	0	0	79
114	162	HAWAIIAN DREDGING CONSTRUCTION CO. INC., Honolulu, Hawaii†	1,189.0	0.0	1,114.0	59	0	0	13	0	27	0	0	0
115	127	COMMERCIAL CONTRACTING CORP., Auburn Hills, Mich.†	1,167.8	41.8	602.8	5	84	0	5	0	0	0	0	0
116	144	WHARTON-SMITH INC., Sanford, Fla.	1,151.8	0.0	2,120.1	48	0	0	52	0	0	0	0	63
117	149	ROGERS-O'BRIEN CONSTRUCTION, Dallas, Texas	1,150.5	0.0	1,177.0	62	0	0	0	1	0	0	37	68
118	115	MCGOUGH, St. Paul, Minn.	1,148.0	0.0	2,000.0	56	0	2	0	13	3	0	26	83
119	126	TEICHERT CONSTRUCTION, Sacramento, Calif.	1,147.8	0.0	928.8	9	0	6	6	4	75	0	0	0
120	111	RYCON CONSTRUCTION, Pittsburgh, Pa.	1,145.4	0.0	986.6	91	0	0	0	0	9	0	0	24
121	80	SUMMIT CONTRACTING GROUP INC., Jacksonville, Fla.	1,132.0	0.0	721.0	100	0	0	0	0	0	0	0	0
122	94	WEBCOR, San Francisco, Calif.	1,129.2	0.0	1,199.0	66	0	1	25	0	9	0	0	76
123	142	BARNARD CONSTRUCTION CO. INC., Bozeman, Mont.†	1,123.2	133.3	214.1	0	0	23	42	5	30	0	0	10
124	128	JAMES G. DAVIS CONSTRUCTION CORP., Rockville, Md.	1,120.7	0.0	NA	100	0	0	0	0	0	0	0	0
125	105	ASRC INDUSTRIAL, Tempe, Ariz.†	1,100.1	0.0	1,333.0	11	13	11	9	18	10	28	0	0
126	88	BUILD GROUP INC., San Francisco, Calif.	1,089.0	0.0	718.0	100	0	0	0	0	0	0	0	100
127	131	JACOBSEN CONSTRUCTION CO. INC., Salt Lake City, Utah	1,086.0	0.0	527.0	95	0	0	0	5	0	0	0	100
128	110	LECHASE CONSTRUCTION SERVICES LLC, Rochester, N.Y.	1,083.6	0.0	948.3	84	3	0	0	8	4	0	0	62
129	147	KPRS CONSTRUCTION SERVICES INC., Brea, Calif.†	1,077.6	0.0	1,075.9	100	0	0	0	0	0	0	0	0
130	114	RAILWORKS, New York, N.Y.	1,058.8	230.1	NA	0	8	0	0	0	92	0	0	0
131	136	THE BECK GROUP, Dallas, Texas	1,058.2	54.2	593.1	85	0	0	0	3	0	0	12	61
132	99	J.H. FINDORFF & SON INC., Madison, Wis.	1,030.0	0.0	1,487.0	100	0	0	0	0	0	0	0	90
133	152	POGUE CONSTRUCTION, McKinney, Texas	1,021.0	0.0	661.0	100	0	0	0	0	0	0	0	94
134	163	ANDERSON COLUMBIA CO. INC., Lake City, Fla.	1,011.0	0.0	614.0	0	23	0	0	0	77	0	0	0
135	96	THE MCSHANE COS., Rosemont, Ill.†	1,009.2	0.0	1,227.7	100	0	0	0	0	0	0	0	12
136	103	DENNIS GROUP, Springfield, Mass.†	999.9	24.1	357.7	0	0	0	0	100	0	0	0	34
137	157	S&B, Houston, Texas†	983.2	0.0	331.3	0	0	0	0	100	0	0	0	0
138	171	PHILLIPS INFRASTRUCTURE INC., Knoxville, Tenn.†	978.0	0.0	976.0	13	4	26	33	0	0	0	0	0
139	132	F.H. PASCHEN, Chicago, Ill.	977.7	0.0	1,700.0	36	0	0	3	0	61	0	0	12
140	137	SATTERFIELD & PONTIKES CONSTRUCTION INC., Houston, Texas†	974.0	0.0	861.0	86	0	0	10	0	4	0	0	40
141	151	JAMES R. VANNOY & SONS CONSTRUCTION CO. INC., Jefferson, N.C.	961.0	0.0	695.0	97	1	0	0	0	2	0	0	80
142	159	GOODFELLOW BROS., Wenatchee, Wash.†	955.8	0.0	1,167.6	59	0	2	12	0	14	8	2	0
143	160	ECC, Burlingame, Calif.†	951.1	227.7	383.4	18	0	1	50	4	15	10	2	0
144	182	CAJUN INDUSTRIES HOLDINGS LLC, Baton Rouge, La.†	942.0	0.0	819.0	0	0	7	0	85	3	0	5	0
145	123	GRAHAM CONSTRUCTION, Omaha, Neb.†	935.0	0.0	153.0	63	0	0	12	6	18	0	0	23
146	150	ENGINEERED STRUCTURES INC. (ESI), Meridian, Idaho	927.4	0.0	1,245.0	97	0	0	3	0	0	0	0	0
147	189	SPAWGLASS HOLDING, Selma, Texas†	927.0	0.0	861.0	88	0	0	0	8	3	0	0	76
148	120	CLANCY & THEYS CONSTRUCTION CO., Raleigh, N.C.	923.8	0.0	1,292.9	99	0	0	0	0	1	0	0	90
149	133	LEASE CRUTCHER LEWIS, Seattle, Wash.†	915.8	0.0	NA	85	0	0	0	0	0	0	15	11
150	179	CARROLL DANIEL CONSTRUCTION CO., Gainesville, Ga.†	908.3	0.0	886.6	54	19	0	0	22	6	0	0	51

#123

**BARNARD CONSTRUCTION** has started work on the Hermes low-power demonstration thermal reactor in Oak Ridge, Tenn.

RANK 2025	RANK 2024	FIRM	2024 REVENUE (\$ MIL)		2024 NEW CONTRACTS	GENERAL BUILDING	MANUFACTURING	POWER	WATER / SEWER / WASTE	INDUS. / PETROLEUM	TRANSPORTATION	HAZARDOUS WASTE	TELECOM	% CM-AT-RISK
			TOTAL	INT'L										
151	164	IPS-INTEGRATED PROJECT SERVICES LLC, Blue Bell, Pa.†	899.9	35.5	1,165.1	0	0	0	0	100	0	0	0	100
152	139	CATAMOUNT CONSTRUCTORS INC., Lakewood, Colo.	896.0	0.0	1,060.0	99	0	1	0	0	0	0	0	71
153	145	JINGOLI - DCO, Lawrenceville, N.J.†	884.0	4.6	556.5	36	0	55	0	0	0	9	0	36
154	143	HANOVER CO., Houston, Texas†	872.5	0.0	1,709.0	100	0	0	0	0	0	0	0	0
155	198	NAN INC., Honolulu, Hawaii†	855.2	0.0	866.5	66	0	1	2	0	31	0	0	0
156	208	SLETTEN COS., Great Falls, Mont.†	852.1	0.0	536.5	78	0	1	15	0	7	0	0	47
157	183	J.P. CULLEN & SONS INC., Janesville, Wis.	849.0	0.0	957.0	77	4	3	0	16	0	0	0	100
158	153	SAULSBURY INDUSTRIES INC., Odessa, Texas	830.0	0.0	840.0	0	0	5	0	95	0	0	0	0
159	140	KRAUS-ANDERSON, Minneapolis, Minn.	826.9	0.0	547.9	97	1	0	0	1	1	0	0	94
160	155	LAS VEGAS PAVING CORP., Las Vegas, Nev.	818.0	0.0	1,118.0	0	0	0	0	0	100	0	0	2
161	185	C.W. DRIVER COS., Pasadena, Calif.†	812.6	0.0	1,424.4	100	0	0	0	0	0	0	0	92
162	255	LEMOINE, Lafayette, La.†	808.3	0.0	645.4	59	0	7	3	0	0	0	0	27
163	134	APTIM, Baton Rouge, La.	796.5	199.5	1,251.3	15	0	2	2	43	3	35	0	18
164	177	ORION GROUP HOLDINGS INC., Houston, Texas	796.4	59.1	727.8	35	0	0	0	0	65	0	0	0
165	181	WILLIAMS BROTHERS CONSTRUCTION, Houston, Texas	792.6	0.0	1,228.8	0	0	0	0	0	100	0	0	0
166	**	POSILICO CIVIL INC., Farmingdale, N.Y.	788.0	0.0	400.0	0	10	4	6	0	56	0	0	0
167	172	BRANCH GROUP, Roanoke, Va.†	781.8	0.0	1,084.0	30	0	0	0	0	60	0	0	10
168	212	LEE LEWIS CONSTRUCTION INC., Lubbock, Texas†	775.0	0.0	1,500.0	100	0	0	0	0	0	0	0	90
169	161	MCCOWNGORDON CONSTRUCTION, Kansas City, Mo.	770.2	0.0	1,042.1	77	0	0	0	23	0	0	0	68
170	210	GREAT LAKES DREDGE & DOCK CO., Houston, Texas	762.7	0.0	917.8	0	0	0	0	0	100	0	0	0
171	158	WEIS BUILDERS INC., Minneapolis, Minn.	761.0	0.0	961.2	100	0	0	0	0	0	0	0	12
172	190	MWH CONSTRUCTORS INC., Broomfield, Colo.†	755.1	21.3	2,450.1	0	3	0	91	6	0	0	0	73
173	224	RODGERS BUILDERS INC., Charlotte, N.C.	753.9	0.0	NA	100	0	0	0	0	0	0	0	84
174	186	WILLMENG CONSTRUCTION INC., Phoenix, Ariz.	752.5	0.0	414.0	85	1	0	0	0	0	0	0	16
175	175	ELFORD INC., Columbus, Ohio	749.2	0.0	922.2	95	0	2	1	1	0	0	1	78
176	191	IOVINO ENTERPRISES, Great Neck, N.Y.†	741.0	0.0	648.0	6	0	0	3	0	77	0	0	0
177	148	PARIC HOLDINGS, St. Louis, Mo.†	737.0	0.0	544.0	37	28	17	0	18	0	0	0	61
178	169	LEVEL 10 CONSTRUCTION, Sunnyvale, Calif.	730.0	0.0	135.4	100	0	0	0	0	0	0	0	50
179	355	CLARK CONSTRUCTION CO., Lansing, Mich.	727.0	0.0	305.0	90	0	0	10	0	0	0	0	35
180	243	W. M. JORDAN CO., Newport News, Va.	718.2	0.0	1,006.9	76	23	0	0	0	1	0	0	64
181	167	BARNHILL CONTRACTING CO., Rocky Mount, N.C.	716.3	0.0	1,132.3	42	0	0	0	0	58	0	0	21
182	237	GRANGER CONSTRUCTION CO., Lansing, Mich.	710.0	0.0	701.0	81	11	0	5	0	0	0	3	57
183	165	MATRIX SERVICE CO., Tulsa, Okla.	708.3	51.1	NA	0	0	32	0	68	0	0	0	0
184	284	CR MEYER, Oshkosh, Wis.	700.4	0.0	NA	1	5	0	0	91	0	0	0	0
185	**	VCC LLC, The Colony, Texas	700.0	0.0	689.0	100	0	0	0	0	0	0	0	97
186	294	DRYMALLA CONSTRUCTION CO., Columbus, Texas	700.0	0.0	500.0	100	0	0	0	0	0	0	0	64
187	170	STELLAR, Jacksonville, Fla.	697.7	0.0	358.0	24	0	0	0	76	0	0	0	24
188	130	TRUEBECK CONSTRUCTION, San Mateo, Calif.	693.5	0.0	895.5	100	0	0	0	0	0	0	0	88
189	231	GRAYCOR INC., Oakbrook Terrace, Ill.†	687.0	0.0	566.0	54	29	6	0	11	0	0	0	0
190	**	CHASSE BUILDING TEAM, Tempe, Ariz.	684.7	0.0	667.0	100	0	0	0	0	0	0	0	93
191	226	GRUNLEY CONSTRUCTION CO. INC., Rockville, Md.	684.0	0.0	395.0	100	0	0	0	0	0	0	0	17
192	168	SUPERIOR CONSTRUCTION HOLDING CO. INC., Jacksonville, Fla.†	672.6	0.0	132.0	0	0	0	0	6	94	0	0	0
193	222	SKYLINE CONSTRUCTION, San Francisco, Calif.†	663.0	0.0	489.0	100	0	0	0	0	0	0	0	0
194	184	FCI CONSTRUCTORS INC., Grand Junction, Colo.†	660.0	0.0	1.0	100	0	0	0	0	0	0	0	90
195	278	PRIMUS, Woodstock, Ga.†	656.0	20.0	518.0	100	0	0	0	0	0	0	0	0
196	225	BULLEY & ANDREWS, Chicago, Ill.†	655.0	0.0	689.0	100	0	0	0	0	0	0	0	63
197	250	ELECTRICAL CONSULTANTS INC., Billings, Mont.†	650.0	0.0	798.0	0	0	100	0	0	0	0	0	0
198	156	TORCON INC., Red Bank, N.J.	648.4	0.0	1,043.0	48	0	0	0	52	0	0	0	100
199	211	URBAN ATELIER GROUP, New York, N.Y.	646.3	0.0	845.4	100	0	0	0	0	0	0	0	98
200	204	KAUFMAN LYNN CONSTRUCTION, Delray Beach, Fla.	638.2	0.0	394.0	100	0	0	0	0	0	0	0	97

RANK 2025	RANK 2024	FIRM	2024 REVENUE (\$ MIL)		2024 NEW CONTRACTS	GENERAL BUILDING	MANUFACTURING	POWER	WATER / SEWER / WASTE	INDUS. / PETROLEUM	TRANSPORTATION	HAZARDOUS WASTE	TELECOM	% CM-AT-RISK
			TOTAL	INT'L										
201	197	BERNARDS, San Fernando, Calif.	632.0	0.0	715.0	100	0	0	0	0	0	0	0	0
202	258	PEINADO CONSTRUCTION, Frisco, Texas	631.0	0.0	480.0	78	0	0	0	0	0	0	22	0
203	234	MYCON GENERAL CONTRACTORS INC., Dallas, Texas	629.0	0.0	542.4	100	0	0	0	0	0	0	0	0
204	196	LANDMARK CONSTRUCTION LLC, Athens, Ga.	628.1	0.0	733.4	100	0	0	0	0	0	0	0	100
205	174	HARKINS BUILDERS INC., Columbia, Md.	626.0	0.0	542.0	100	0	0	0	0	0	0	0	74
206	141	KAST CONSTRUCTION, West Palm Beach, Fla.	624.3	0.0	665.9	100	0	0	0	0	0	0	0	100
207	202	C D SMITH CONSTRUCTION, Fond du Lac, Wis.	618.0	0.0	900.0	81	0	0	19	0	0	0	0	0
208	**	GEMMA POWER SYSTEMS, Glastonbury, Conn.†	611.4	0.0	1,752.1	0	0	99	0	0	0	0	0	0
209	223	RAND CONSTRUCTION CORP., Alexandria, Va.	608.0	0.0	695.0	100	0	0	0	0	0	0	0	2
210	322	BHI, Vernal, Utah	606.4	0.0	393.0	36	2	42	6	8	0	0	1	84
211	221	PIKE CONSTRUCTION SERVICES, Rochester, N.Y.	605.8	0.0	728.4	97	1	0	0	1	1	0	0	83
212	214	DICK ANDERSON CONSTRUCTION, Helena, Mont.†	605.0	0.0	NA	91	3	0	5	0	1	0	0	80
213	215	ZACHRY CONSTRUCTION CORP., San Antonio, Texas†	603.6	0.0	1,054.1	0	0	0	2	0	94	0	3	0
214	187	H&M CO. INC., Jackson, Tenn.†	600.0	0.0	500.0	28	3	0	0	69	0	0	0	0
215	**	XL CONSTRUCTION, Milpitas, Calif.†	595.2	0.0	168.9	100	0	0	0	0	0	0	0	25
216	207	STAKER PARSON MATERIALS & CONSTRUCTION, Ogden, Utah	591.0	0.0	266.5	35	1	0	1	0	61	0	1	0
217	253	DEANGELIS DIAMOND, Naples, Fla.	589.0	0.0	482.9	90	1	0	0	0	9	0	0	92
218	239	ROCKFORD CONSTRUCTION CO., Grand Rapids, Mich.	576.3	1.7	216.8	68	7	25	0	0	0	0	0	28
219	233	PARKWAY C&A, Lewisville, Texas	574.0	0.0	580.0	100	0	0	0	0	0	0	0	0
220	180	DIMEO CONSTRUCTION CO., Johnston, R.I.	573.2	0.0	1,190.0	100	0	0	0	0	0	0	0	90
221	245	O&G INDUSTRIES INC., Torrington, Conn.	566.9	0.0	1,165.8	46	4	0	0	1	49	0	0	41
222	203	THE MIDDLESEX CORP., Littleton, Mass.†	566.7	0.0	399.3	0	0	0	0	0	100	0	0	10
223	188	SELLEN CONSTRUCTION CO. INC., Seattle, Wash.	565.0	0.0	33.0	100	0	0	0	0	0	0	0	0
224	308	D.F. CHASE INC., Nashville, Tenn.	561.3	0.0	460.0	98	0	0	0	2	0	0	0	83
225	178	THE KORTE CO., Highland, Ill.	553.0	0.0	556.0	100	0	0	0	0	0	0	0	5
226	200	INDEPENDENCE CONSTRUCTION, Brecksville, Ohio†	548.0	0.0	671.0	95	0	0	0	0	0	5	0	82
227	166	S&B USA, Pittsburgh, Pa.†	547.0	0.0	515.0	0	0	3	24	0	72	0	0	49
228	227	SKENDER, Chicago, Ill.	546.8	0.0	917.0	100	0	0	0	0	0	0	0	81
229	289	CAHILL CONTRACTORS, San Francisco, Calif.	541.5	0.0	65.3	100	0	0	0	0	0	0	0	0
230	241	VECELLIO GROUP INC., Palm Beach, Fla.	540.2	0.0	365.0	2	0	0	0	0	98	0	0	0
231	205	BATSON-COOK CONSTRUCTION, Atlanta, Ga.	538.4	0.0	698.0	100	0	0	0	0	0	0	0	0
232	216	DELLBROOK   JKS, Quincy, Mass.	532.3	0.0	290.2	100	0	0	0	0	0	0	0	100
233	176	SAUNDERS CONSTRUCTION INC., Englewood, Colo.†	529.3	0.0	687.0	95	1	0	0	0	3	0	1	94
234	272	JUNEAU CONSTRUCTION CO., Atlanta, Ga.	524.0	0.0	554.3	100	0	0	0	0	0	0	0	100
235	**	WALSH CONSTRUCTION CO., Portland, Ore.	522.6	0.0	NA	100	0	0	0	0	0	0	0	0
236	213	NEW SOUTH CONSTRUCTION CO., Atlanta, Ga.	518.0	0.0	750.0	70	2	0	0	0	28	0	0	98
237	244	MANSON CONSTRUCTION CO., Seattle, Wash.†	513.2	0.4	513.3	0	0	0	0	5	95	0	0	0
238	287	LEOPARDO CONSTRUCTION, Hoffman Estates, Ill.	512.6	0.0	NA	100	0	0	0	0	0	0	0	0
239	331	RONCELLI INC., Sterling Heights, Mich.	512.0	53.0	453.0	0	37	21	0	42	0	0	0	45
240	273	Q&D CONSTRUCTION, Sparks, Nev.	511.0	0.0	445.5	15	1	6	1	0	75	0	1	15
241	236	CROWDER CONSTRUCTORS INC., Charlotte, N.C.†	510.6	0.0	743.7	4	1	7	62	9	16	0	0	8
242	270	KLINGER COS. LLC, Sioux City, Iowa†	509.9	0.0	291.8	21	5	4	0	69	0	0	1	13
243	193	SHIMMICK, Irvine, Calif.†	506.6	0.0	219.2	0	0	0	52	0	43	0	0	0
244	317	COLUMBIA, North Reading, Mass.	504.0	0.0	141.6	79	8	0	0	13	0	0	0	100
245	251	DANIS, Miamisburg, Ohio	503.2	0.0	342.2	70	24	0	0	6	0	0	0	84
246	201	STACY AND WITBECK INC., Alameda, Calif.†	501.0	0.0	1,400.0	0	0	0	0	0	100	0	0	50
247	**	SAMPSON CONSTRUCTION, Lincoln, Neb.	500.0	0.0	841.0	100	0	0	0	0	0	0	0	62
248	194	OLTMANS CONSTRUCTION CO., Whittier, Calif.	500.0	0.0	1,300.0	93	0	2	0	0	5	0	0	0
249	307	M. B. KAHN CONSTRUCTION CO. INC., Columbia, S.C.†	499.3	0.0	608.6	81	7	1	11	0	0	0	0	33
250	312	PIONEER GENERAL CONTRACTORS INC., Grand Rapids, Mich.†	499.0	0.0	627.0	100	0	0	0	0	0	0	0	0

**XL CONSTRUCTION** announced a merger with Graham Construction on March 4, joining Graham's U.S. build-ings group (No. 145 on this year's list).

RANK 2025	RANK 2024	FIRM	2024 REVENUE (\$ MIL)		2024 NEW CONTRACTS	GENERAL BUILDING	MANUFACTURING	POWER	WATER / SEWER / WASTE	INDUS. / PETROLEUM	TRANSPORTATION	HAZARDOUS WASTE	TELECOM	% CM-AT-RISK
			TOTAL	INT'L										
251	**	NEXAMP, Boston, Mass.	496.0	0.0	867.0	0	0	100	0	0	0	0	0	100
252	329	THE BETTE COS., Latham, N.Y.	492.0	0.0	694.5	89	0	4	0	0	7	0	0	0
253	254	BBL CONSTRUCTION SERVICES LLC, Albany, N.Y.	491.1	0.0	680.9	100	0	0	0	0	0	0	0	20
254	220	CERRIS BUILDERS (F/K/A MW BUILDERS), Pflugerville, Texas	490.0	0.0	918.0	100	0	0	0	0	0	0	0	0
255	232	IDEAL CONTRACTING, Detroit, Mich.	489.7	0.0	525.0	22	78	0	0	0	0	0	0	0
256	342	HAYDON COS., Phoenix, Ariz.	488.0	0.0	503.0	50	9	0	5	0	22	0	15	83
257	302	BRADBURY STAMM CONSTRUCTION INC., Albuquerque, N.M.†	487.5	0.0	540.0	98	0	0	2	0	0	0	0	42
258	199	MILLIE AND SEVERSON GENERAL CONTRACTORS, Los Alamitos, Calif.†	485.0	0.0	338.0	100	0	0	0	0	0	0	0	0
259	267	NIBBI BROS. ASSOCIATES INC., San Francisco, Calif.	481.2	0.0	NA	96	0	0	3	0	1	0	0	94
260	206	SHAW CONSTRUCTION, Denver, Colo.†	480.0	0.0	450.3	100	0	0	0	0	0	0	0	95
261	256	SHIEL SEXTON CO. INC., Indianapolis, Ind.†	479.0	0.0	1,200.0	100	0	0	0	0	0	0	0	80
262	228	HAUSMANN CONSTRUCTION, Lincoln, Neb.	478.1	0.0	412.0	100	0	0	0	0	0	0	0	73
263	246	KNUTSON CONSTRUCTION, Minneapolis, Minn.†	477.0	0.0	765.0	78	2	16	0	0	0	0	0	4
264	238	CRB, Kansas City, Mo.†	475.5	4.5	894.3	0	0	0	0	100	0	0	0	42
265	298	SEMA CONSTRUCTION INC., Centennial, Colo.†	472.4	0.0	1,228.4	0	0	0	1	0	99	0	0	24
266	291	RUSCILLI CONSTRUCTION CO. LLC, Dublin, Ohio	472.0	0.0	472.0	100	0	0	0	0	0	0	0	100
267	252	IMC CONSTRUCTION, Malvern, Pa.	470.7	0.0	436.2	93	0	0	0	7	0	0	0	100
268	217	EMJ CONSTRUCTION, Chattanooga, Tenn.	468.2	0.0	460.2	98	0	0	0	2	0	0	0	0
269	240	CSI CONSTRUCTION CO., Colorado Springs, Colo.	466.9	0.0	NA	100	0	0	0	0	0	0	0	0
270	345	LYDIG CONSTRUCTION, Spokane, Wash.	465.0	0.0	720.0	63	8	0	9	15	0	0	6	49
271	332	GH PHIPPS CONSTRUCTION CO., Greenwood Village, Colo.†	461.3	0.0	522.3	100	0	0	0	0	0	0	0	49
272	338	THE HAGERMAN GROUP, Fort Wayne, Ind.	460.0	0.0	550.0	82	5	0	0	0	0	0	13	63
273	277	C. OVERAA & CO., Richmond, Calif.	458.3	0.0	55.2	51	0	1	40	8	1	0	0	15
274	280	SUKUT CONSTRUCTION LLC, Santa Ana, Calif.	457.7	0.0	370.2	14	0	13	64	0	7	0	0	0
275	305	KRAEMER NORTH AMERICA LLC, Plain, Wis.	455.7	0.0	1,051.5	0	0	0	0	0	100	0	0	35
276	**	CG SCHMIDT, Milwaukee, Wis.	455.0	0.0	795.0	92	3	0	0	4	0	0	0	93
277	314	RUSSELL GROUP INC., Davenport, Iowa†	453.9	0.0	512.0	100	0	0	0	0	0	0	0	13
278	264	J. FLETCHER CREAMER & SON INC., Hackensack, N.J.†	452.2	0.0	547.1	3	0	20	43	8	12	0	13	0
279	260	ARMADA HOFFLER, Virginia Beach, Va.†	451.7	0.0	85.9	100	0	0	0	0	0	0	0	0
280	301	BOWEN, Indianapolis, Ind.	451.5	0.0	382.0	0	0	15	76	9	0	0	0	3
281	374	T N WARD CO., Ardmore, Pa.	449.6	80.7	450.0	99	0	0	0	0	0	0	0	0
282	309	LYLES CONSTRUCTION GROUP, Fresno, Calif.†	448.1	0.0	354.3	12	0	1	78	3	4	0	0	0
283	343	SHOOK CONSTRUCTION, Moraine, Ohio	447.0	0.0	548.6	36	22	0	34	7	0	0	1	35
284	229	EDIFICE CONSTRUCTION, Charlotte, N.C.	444.0	0.0	571.0	99	0	0	1	0	0	0	0	38
285	339	SCHIMENTI CONSTRUCTION CO., New York, N.Y.	438.0	0.0	391.0	100	0	0	0	0	0	0	0	17
286	247	PARSONS CORP., Chantilly, Va.	435.0	143.5	NA	39	0	0	0	0	58	1	2	23
287	290	R&O CONSTRUCTION, Ogden, Utah	434.0	0.0	524.0	91	8	0	0	0	0	0	0	100
288	340	CHARLES PERRY PARTNERS INC., Gainesville, Fla.	428.0	0.0	378.0	100	0	0	0	0	0	0	0	66
289	327	SEVENSON ENVIRONMENTAL SERVICES INC., Niagara Falls, N.Y.	424.9	0.0	420.1	0	0	0	0	0	0	100	0	0
290	297	HILL & WILKINSON GENERAL CONTRACTORS, Richardson, Texas	420.8	0.0	264.3	91	9	0	0	0	0	0	0	90
291	**	PLACE SERVICES INC., Canton, Ga.	418.4	0.0	467.3	100	0	0	0	0	0	0	0	0
292	310	PERLO CONSTRUCTION, Tualatin, Ore.†	415.3	0.0	289.4	100	0	0	0	0	0	0	0	0
293	311	EXECUTIVE CONSTRUCTION INC., Hillside, Ill.	415.0	0.0	45.3	83	0	0	0	2	0	0	14	100
294	257	INTECH CONSTRUCTION, Philadelphia, Pa.	413.7	0.0	229.0	100	0	0	0	0	0	0	0	90
295	288	HARPER GENERAL CONTRACTORS, Greenville, S.C.†	411.9	0.0	NA	68	0	0	31	0	0	0	0	72
296	146	KAJIMA BUILDING & DESIGN GROUP INC., Atlanta, Ga.	410.0	0.0	113.0	29	64	1	0	6	0	0	0	0
297	263	BOH BROS. CONSTRUCTION CO. LLC, New Orleans, La.†	400.0	0.0	378.0	43	0	0	0	14	43	0	0	51
298	336	CAPSTONE BUILDING CORP., Birmingham, Ala.	399.4	0.0	215.7	100	0	0	0	0	0	0	0	0
299	268	MARCH ASSOCIATES CONSTRUCTION INC., Wayne, N.J.	398.0	0.0	257.0	100	0	0	0	0	0	0	0	0
300	359	KIELY FAMILY OF COS., Tinton Falls, N.J.†	396.4	0.0	440.5	7	0	0	5	69	0	0	0	0

RANK 2025	RANK 2024	FIRM	2024 REVENUE (\$ MIL)		2024 NEW CONTRACTS	GENERAL BUILDING	MANUFACTURING	POWER	WATER / SEWER / WASTE	INDUS. / PETROLEUM	TRANSPORTATION	HAZARDOUS WASTE	TELECOM	% CM-AT-RISK
			TOTAL	INT'L										
301	**	T. A. LOVING CO., Goldsboro, N.C.	396.2	0.0	234.7	55	0	0	43	0	2	0	0	32
302	351	BARR & BARR INC., New York, N.Y.	390.0	0.0	912.0	100	0	0	0	0	0	0	0	100
303	306	E.W. HOWELL CO. LLC, Plainview, N.Y.	389.9	0.0	265.0	100	0	0	0	0	0	0	0	53
304	262	HASELDEN CONSTRUCTION, Centennial, Colo.†	389.8	0.0	157.0	100	0	0	0	0	0	0	0	81
305	360	BROWN CONSTRUCTION INC., West Sacramento, Calif.	389.1	0.0	149.5	100	0	0	0	0	0	0	0	0
306	209	LANDSOUTH CONSTRUCTION, Jacksonville, Fla.	388.5	0.0	343.4	100	0	0	0	0	0	0	0	0
307	316	HAWKINS CONSTRUCTION CO., Omaha, Neb.	387.6	0.0	256.0	5	0	0	43	0	51	0	0	10
308	318	WIELAND, Lansing, Mich.	386.1	0.0	301.7	24	29	0	0	40	0	6	0	65
309	279	COMMODORE BUILDERS, Newton, Mass.	386.0	0.0	417.0	100	0	0	0	0	0	0	0	100
310	173	ARCH-CON CORP., Houston, Texas	384.0	0.0	122.0	100	0	0	0	0	0	0	0	0
311	326	MARKET & JOHNSON INC., Eau Claire, Wis.	381.4	0.0	112.9	88	5	0	5	2	0	0	0	0
312	394	MEB, Chesapeake, Va.	379.5	0.0	643.5	19	0	0	76	6	0	0	0	0
313	313	NEI GENERAL CONTRACTING, Randolph, Mass.	377.6	0.0	156.0	100	0	0	0	0	0	0	0	35
314	364	BRYAN CONSTRUCTION INC., Colorado Springs, Colo.†	376.9	1.6	330.0	49	0	0	0	0	0	0	0	18
315	266	CALLAHAN CONSTRUCTION MANAGERS, Bridgewater, Mass.	375.0	0.0	274.0	100	0	0	0	0	0	0	0	0
316	357	PARRISH CONSTRUCTION GROUP INC., Perry, Ga.	368.8	0.0	571.8	88	10	0	2	0	0	0	0	88
317	344	JAMES E. ROBERTS - OBAYASHI CORP., Danville, Calif.	368.6	0.0	102.7	100	0	0	0	0	0	0	0	20
318	230	BOZZUTO CONSTRUCTION, Greenbelt, Md.	368.4	0.0	151.9	100	0	0	0	0	0	0	0	100
319	328	GARDNER BUILDERS, Minneapolis, Minn.	363.0	0.0	339.0	89	7	0	0	0	1	0	3	22
320	315	RIVER CITY CONSTRUCTION LLC, East Peoria, Ill.†	363.0	0.0	227.0	72	4	0	23	0	0	0	0	28
321	271	DEACON CONSTRUCTION LLC, Portland, Ore.†	362.7	0.0	287.5	100	0	0	0	0	0	0	0	0
322	325	BUCH CONSTRUCTION, Fulton, Md.	362.0	0.0	NA	100	0	0	0	0	0	0	0	0
323	282	S. T. WOOTEN CORP., Wilson, N.C.	361.5	0.0	377.2	0	0	0	0	0	100	0	0	0
324	337	FAGEN INC., Granite Falls, Minn.	359.9	0.0	77.4	0	0	43	0	57	0	0	0	0
325	**	HILLWOOD CONSTRUCTION SERVICES, Dallas, Texas	357.3	0.0	589.3	100	0	0	0	0	0	0	0	0
326	367	VERICON CONSTRUCTION CO., Mountainside, N.J.	357.1	0.0	192.7	100	0	0	0	0	0	0	0	4
327	319	ABSHER CONSTRUCTION CO., Puyallup, Wash.†	352.0	0.0	207.5	76	0	0	0	0	24	0	0	0
328	353	FORT MYER CONSTRUCTION CORP., Washington, D.C.	352.0	0.0	332.0	0	0	0	6	0	90	0	0	0
329	354	DOSTER CONSTRUCTION CO. INC., Birmingham, Ala.	349.8	0.0	273.6	98	1	0	0	1	0	0	0	73
330	365	BW DESIGN GROUP, St. Louis, Mo.	347.9	0.0	NA	0	4	0	0	93	0	0	2	0
331	361	HOURIGAN, Richmond, Va.	347.9	0.0	631.0	86	14	0	0	0	0	0	0	44
332	349	WILLIAM A. RANDOLPH INC., Gurnee, Ill.	347.0	0.0	325.0	100	0	0	0	0	0	0	0	48
333	335	BLUM CONSTRUCTION, Winston-Salem, N.C.†	346.8	0.0	451.0	100	0	0	0	0	0	0	0	88
334	219	DOME CONSTRUCTION CORP., South San Francisco, Calif.	343.4	0.0	273.1	27	0	0	0	73	0	0	0	0
335	352	BERGLUND CONSTRUCTION CO., Chicago, Ill.	341.0	0.0	NA	100	0	0	0	0	0	0	0	64
336	334	KEY CONSTRUCTION INC., Wichita, Kan.	339.9	0.0	387.9	80	0	0	0	0	0	0	20	70
337	396	JAYNES CORP., Albuquerque, N.M.	339.3	0.0	500.0	83	0	0	0	0	13	0	0	65
338	299	JHL CONSTRUCTORS, Englewood, Colo.	339.0	0.0	750.0	80	0	0	11	0	9	0	0	74
339	296	POETTKER CONSTRUCTION CO., Breese, Ill.	338.0	0.0	405.0	91	6	3	0	0	0	0	0	11
340	321	ROEBBELEN CONTRACTING INC., El Dorado Hills, Calif.†	336.5	0.0	271.0	73	0	0	0	0	0	0	27	0
341	**	BAY CITIES PAVING & GRADING INC., Concord, Calif.	335.9	0.0	248.6	0	0	0	0	0	92	0	0	0
342	333	CDM SMITH, Boston, Mass.†	334.8	0.0	261.0	0	0	0	100	0	0	0	0	0
343	192	OPUS, Minnetonka, Minn.	332.6	0.0	NA	100	0	0	0	0	0	0	0	0
344	276	HOLT CONSTRUCTION, Pearl River, N.Y.	332.0	0.0	243.0	66	0	0	0	0	26	0	8	40
345	**	GLY CONSTRUCTION, Bellevue, Wash.	331.9	0.0	395.0	100	0	0	0	0	0	0	0	93
346	**	KADEAN CONSTRUCTION CO., St. Louis, Mo.	331.0	0.0	172.1	79	13	0	0	8	0	0	0	89
347	324	EXXEL PACIFIC, Bellingham, Wash.	328.6	0.0	201.1	100	0	0	0	0	0	0	0	100
348	300	FORTUNE-JOHNSON LLC, Peachtree Corners, Ga.	327.5	0.0	523.4	100	0	0	0	0	0	0	0	100
349	381	WAGMAN INC., York, Pa.†	327.3	0.0	169.6	11	3	0	4	1	81	0	0	3
350	274	SHELCO LLC, Charlotte, N.C.	327.0	0.0	357.0	89	0	0	0	10	0	0	0	14

#331

**HOURIGAN** in JV with Gray, is working on a \$1-billion manufacturing plant for LEGO in Virginia. The facility is designed to be carbon neutral.

RANK 2025	RANK 2024	FIRM	2024 REVENUE (\$ MIL)		2024 NEW CONTRACTS	GENERAL BUILDING	MANUFACTURING	POWER	WATER / SEWER / WASTE	INDUS. / PETROLEUM	TRANSPORTATION	HAZARDOUS WASTE	TELECOM	% CHG-AT-RISK
			TOTAL	INT'L										
351	373	MCL CONSTRUCTION, Omaha, Neb.	327.0	0.0	462.0	100	0	0	0	0	0	0	0	100
352	275	TRITON CONSTRUCTION CO. LLC, New York, N.Y.	323.0	0.0	500.0	100	0	0	0	0	0	0	0	100
353	385	GHILOTTI CONSTRUCTION CO., Santa Rosa, Calif.	323.0	0.0	NA	12	0	0	18	0	70	0	0	100
354	320	KBE BUILDING CORP., Farmington, Conn.†	323.0	0.0	243.4	100	0	0	0	0	0	0	0	54
355	293	PC CONSTRUCTION CO., South Burlington, Vt.	322.5	0.0	1,182.1	37	5	5	53	0	0	0	0	40
356	330	BELL & ASSOCIATES CONSTRUCTION LLC, Brentwood, Tenn.	322.0	0.0	262.0	64	0	0	0	0	36	0	0	58
357	292	KBS INC., Richmond, Va.	320.7	0.0	361.9	100	0	0	0	0	0	0	0	58
358	248	WOHLSEN CONSTRUCTION CO., Lancaster, Pa.	320.0	0.0	436.0	82	1	0	0	5	12	0	0	55
359	**	MATT CONSTRUCTION, Santa Fe Springs, Calif.	319.0	0.0	494.0	100	0	0	0	0	0	0	0	0
360	363	FONTAINE BROS. INC., Springfield, Mass.	318.2	0.0	297.1	100	0	0	0	0	0	0	0	67
361	**	DENHAM-BLYTHE CO., Lexington, Ky.	316.0	0.0	99.0	21	24	0	0	44	0	10	0	0
362	242	KITCHELL CORP., Phoenix, Ariz.†	315.8	0.0	466.0	99	0	0	0	0	0	1	0	73
363	391	ALBERT C. KOBAYASHI INC., Waipahu, Hawaii	311.8	0.0	NA	100	0	0	0	0	0	0	0	0
364	285	CF EVANS CONSTRUCTION, Orangeburg, S.C.†	311.8	0.0	88.1	100	0	0	0	0	0	0	0	0
365	350	HARPER CONSTRUCTION CO. INC., San Diego, Calif.	309.1	0.0	457.8	50	0	0	0	0	50	0	0	0
366	399	GARCO CONSTRUCTION, Spokane, Wash.	305.0	0.0	510.0	39	11	0	10	20	20	0	0	26
367	**	WT RICH CO., Natick, Mass.†	303.0	0.0	210.1	100	0	0	0	0	0	0	0	69
368	387	PENNTX CONSTRUCTION CO. INC., Blue Bell, Pa.	300.8	0.0	248.3	100	0	0	0	0	0	0	0	100
369	371	ULLIMAN SCHUTTE CONSTRUCTION LLC, Miamisburg, Ohio†	297.8	0.0	295.0	0	0	0	100	0	0	0	0	17
370	386	J.D. ECKMAN INC., Atglen, Pa.	296.9	0.0	209.4	0	0	0	0	0	100	0	0	0
371	**	HOWARD SHOCKEY & SONS INC., Winchester, Va.	294.5	0.0	361.3	96	0	0	0	4	0	0	0	25
372	**	CDI CONTRACTORS, Little Rock, Ark.†	294.0	0.0	NA	95	5	0	0	0	0	0	0	29
373	**	LPX GROUP, Louisville, Ky.†	293.8	0.0	391.4	40	0	0	25	0	34	0	0	0
374	**	PLANT CONSTRUCTION CO. LP, San Francisco, Calif.	292.3	0.0	316.5	100	0	0	0	0	0	0	0	10
375	**	FORTE CONSTRUCTION CORP., Islandia, N.Y.	290.7	0.0	578.0	17	0	0	0	0	83	0	0	0
376	**	WHITAKER CONSTRUCTION CO. INC., Brigham City, Utah	288.8	0.0	188.0	4	0	1	61	16	17	0	0	17
377	**	R.D. OLSON CONSTRUCTION, Irvine, Calif.	288.4	0.0	75.3	100	0	0	0	0	0	0	0	0
378	**	BYRNE CONSTRUCTION SERVICES, Fort Worth, Texas	287.6	0.0	187.0	100	0	0	0	0	0	0	0	82
379	**	LUSARDI CONSTRUCTION CO., San Marcos, Calif.	286.8	0.0	122.7	97	3	0	0	0	0	0	0	0
380	341	RIDGEMONT COMMERCIAL CO., Irving, Texas	285.0	0.0	394.3	100	0	0	0	0	0	0	0	60
381	259	ANDRES CONSTRUCTION SERVICES, Dallas, Texas	284.4	0.0	262.2	100	0	0	0	0	0	0	0	99
382	**	OTTO CONSTRUCTION, Sacramento, Calif.	282.8	0.0	429.0	91	0	0	0	0	9	0	0	13
383	**	VIS CONSTRUCTION SERVICES, Pewaukee, Wis.	282.4	0.0	183.0	99	0	0	0	0	1	0	0	8
384	400	WATER RESOURCES GROUP, Deerwood, Minn.†	282.0	0.0	391.0	7	0	0	93	0	0	0	0	19
385	346	DONOHUE CONSTRUCTION CO., Bethesda, Md.	280.0	0.0	410.0	100	0	0	0	0	0	0	0	0
386	393	BLYTHE DEVELOPMENT CO., Charlotte, N.C.†	278.4	0.0	269.0	30	0	0	0	0	70	0	0	0
387	**	S. M. WILSON & CO., St. Louis, Mo.	277.4	0.0	200.0	100	0	0	0	0	0	0	0	66
388	**	SACHSE CONSTRUCTION, Detroit, Mich.	276.0	0.0	385.0	100	0	0	0	0	0	0	0	0
389	397	WESPAC CONSTRUCTION, Phoenix, Ariz.	275.0	0.0	219.2	100	0	0	0	0	0	0	0	3
390	389	CALHOUN CONSTRUCTION SERVICES, Louisville, Ky.	273.4	0.0	1,064.0	100	0	0	0	0	0	0	0	48
391	**	VERDEX CONSTRUCTION, West Palm Beach, Fla.†	269.5	0.0	289.6	100	0	0	0	0	0	0	0	99
392	370	BUFFALO CONSTRUCTION, Louisville, Ky.	267.6	0.0	185.6	100	0	0	0	0	0	0	0	0
393	269	FRANA COS. INC., Hopkins, Minn.	267.0	0.0	195.5	100	0	0	0	0	0	0	0	0
394	358	MORLEY BUILDERS, Santa Monica, Calif.†	266.4	0.0	208.6	100	0	0	0	0	0	0	0	0
395	**	EMBREE CONSTRUCTION GROUP, Georgetown, Texas	258.0	0.0	275.0	100	0	0	0	0	0	0	0	0
396	**	WARFEL CONSTRUCTION CO., East Petersburg, Pa.	257.4	0.0	NA	100	0	0	0	0	0	0	0	0
397	**	LANDRY/FRENCH CONSTRUCTION, Scarborough, Maine†	255.4	0.0	208.0	86	7	0	0	7	0	0	0	60
398	362	GALAXY BUILDERS LTD., San Antonio, Texas	252.0	0.0	148.0	100	0	0	0	0	0	0	0	0
399	303	TERMINAL CONSTRUCTION CORP., Wood-Ridge, N.J.	250.0	0.0	889.0	100	0	0	0	0	0	0	0	0
400	**	RAGLE INC., Newburgh, Ind.	249.1	0.0	411.9	0	0	0	0	0	100	0	0	0

# Where To Find the Top 400

FIRM	RANK	FIRM	RANK	FIRM	RANK	FIRM	RANK
<b>A</b>		Callahan Construction Managers	315	ESS Cos.	109	Holder Construction	15
Absher Construction Co.	327	Capstone Building Corp.	298	Evans General Contractors	56	Holt Construction	344
Adolfson & Peterson Construction	96	Carroll Daniel Construction Co.	150	Executive Construction Inc.	293	Hourigan	331
AECOM	14	Catamount Constructors Inc.	152	Exxel Pacific	347	E.W. Howell Co. LLC	303
Alberici-Flintco	34	CDI Contractors	372	Eyete Americas Holding Inc.	53	Hunter Roberts Construction Group LLC	98
Alston Construction Co. Inc.	80	CDM Smith	342	<b>F</b>			
Ames Construction Inc.	63	Cerris Builders (F/K/A MW Builders)	254	Fagen Inc.	324	Ideal Contracting	255
Anderson Columbia Co. Inc.	134	CF Evans Construction	364	FCI Constructors Inc.	194	IMC Construction	267
Dick Anderson Construction	212	D.F. Chase Inc.	324	FCL Builders	104	Independence Construction	226
ANDRES Construction Services	381	Chasse Building Team	190	Ferreira Construction Co. Inc.	90	INTECH Construction	294
APTIM	163	Choate Construction Co.	82	Ferrovial Construction	60	Iovino Enterprises	176
Arch-Con Corp.	310	The Christman Co.	75	J.H. Findorff & Son Inc.	132	IPS-Integrated Project Services LLC	151
ARCO Construction Cos.	29	The Cianbro Cos.	94	Flatiron Construction Corp.	51	<b>J</b>	
Aristeo Construction Co.	73	Clancy & Theys Construction Co.	148	J. Fletcher Creamer & Son Inc.	278	Jacobsen Construction Co. Inc.	127
Armada Hoffer	279	Clark Construction Co.	179	Fluor	7	Jaynes Corp.	337
ASRC Industrial	125	Clark Group	19	Fontaine Bros. Inc.	360	JHL Constructors	338
Austin Industries	31	Clayco	21	Fort Myer Construction Corp.	328	Jingoi - DCO	153
<b>B</b>		Clune Construction	58	Fort Construction Corp.	375	Joeris General Contractors	113
Balfour Beatty US	32	Coastal Construction Group	89	Fortis Construction	57	W. M. Jordan Co.	180
Barnard Construction Co. Inc.	123	Colas Inc.	55	Fortune-Johnson LLC	348	JRM Construction Management	103
Barnhill Contracting Co.	181	Columbia	244	Frana Cos. Inc.	393	Juneau Construction Co.	234
Barr & Barr Inc.	302	Commercial Contracting Corp.	115	<b>G</b>		<b>K</b>	
Bartlett Cocke General Contractors LLC	108	Commodore Builders	309	Galaxy Builders Ltd.	398	Kadean Construction Co.	346
Barton Malow Holdings LLC	35	The Conlan Company	83	Garco Construction	366	M. B. Kahn Construction Co. Inc.	249
Batson-Cook Construction	231	Consigli Building Group Inc.	40	Gardner Builders	319	Kajima Building & Design Group Inc.	296
Bay Cities Paving & Grading Inc.	341	Construction Partners Inc.	68	Garney Holding Co.	64	KAST Construction	206
BBL Construction Services LLC	253	CORE Construction Group	62	Gemma Power Systems	208	Kaufman Lynn Construction	200
Bechtel	2	CRB	264	Ghiolotti Construction Co.	353	KBE Building Corp.	354
The Beck Group	131	Crossland Construction Co. Inc.	50	Gilbane Building Co.	17	KBS Inc.	357
Bell & Associates Construction LLC	356	Crowder Constructors Inc.	241	GLY Construction	345	Key Construction Inc.	336
Berglund Construction Co.	335	CSI Construction Co.	269	Goodfellow Bros.	142	Kiely Family of Cos.	300
Bernards	201	J.P. Cullen & Sons Inc.	157	Graham Construction	145	Kiewit Corp.	3
The Bette Cos.	252	<b>D</b>		Granger Construction Co.	182	Kitchell Corp.	362
BHI	210	Danis	245	Granite Construction	39	Klinger Cos. LLC	242
Big-D Construction	48	James G. Davis Construction Corp.	124	Gray	36	Knutson Construction	263
Black & Veatch	45	Day & Zimmermann	65	Graycor Inc.	189	Albert C. Kobayashi Inc.	363
Blum Construction	333	Deacon Construction LLC	321	Great Lakes Dredge & Dock Co.	170	The Kokosing Group of Cos.	49
Blythe Development Co.	386	DeAngelis Diamond	217	Grunley Construction Co. Inc.	191	The Korte Co.	225
BNBuilders	105	Dellbrook   JKS	232	<b>H</b>		KPRS Construction Services Inc.	129
Boh Bros. Construction Co. LLC	297	Denham-Blythe Co.	361	H&M Co. Inc.	214	Kraemer North America LLC	275
The Boldt Co.	95	Dennis Group	136	Hanover Co.	154	Kraus-Anderson	159
Bowen	280	DEPCOM Power	85	BL Harbert International	81	<b>L</b>	
Bozzuto Construction	318	Devcon Construction Inc.	106	Harkins Builders Inc.	205	Landmark Construction LLC	204
Bradbury Stamm Construction Inc.	257	PI Dick - Trumbull - Lindy Group	88	Harper Construction Co. Inc.	365	Landry/French Construction	397
Branch Group	167	Dimeo Construction Co.	220	Harper General Contractors	295	LandSouth Construction	306
Brasfield & Gorrie	23	Dome Construction Corp.	334	Harvey Cleary	72	Lane Industries Inc.	93
Brinkmann Constructors	87	Donohoe Construction Co.	385	Haselden Construction	304	Las Vegas Paving Corp.	160
Brown Construction Inc.	305	Doster Construction Co. Inc.	329	Haskell	59	Lease Crutcher Lewis	149
Bryan Construction Inc.	314	DPR Construction	8	Hathaway Dinwiddie Construction Co.	100	LeChase Construction Services LLC	128
Buch Construction	322	Dragados	37	Hausmann Construction	262	LEMOINE	162
Buffalo Construction	392	C.W. Driver Cos.	161	Hawaiian Dredging Construction Co. Inc.	114	Leopardo Construction	238
Build Group Inc.	126	Drymalla Construction Co.	186	Hawkins Construction Co.	307	Level 10 Construction	178
Bulley & Andrews	196	JE Dunn Construction Co.	18	Haydon Cos.	256	Lee Lewis Construction Inc.	168
Burns & McDonnell	42	<b>E</b>		Hensel Phelps	13	T. A. Loving Co.	301
Byrne Construction Services	378	ECC	143	Herzog Enterprises Inc.	112	LPX Group	373
BW Design Group	330	J.D. Eckman Inc.	370	Hill & Wilkinson General Contractors	290	Lusardi Construction Co.	379
<b>C</b>		EDIFICE Construction	284	Hillwood Construction Services	325	Lydig Construction	270
Caddell Construction Co. LLC	97	Electrical Consultants Inc.	197	HITT Contracting	10	Lyles Construction Group	282
Cahill Contractors	229	Elford Inc.	175	Hoar Construction	91		
Cajun Industries Holdings LLC	144	Embree Construction Group	395	Hoffman Construction	26		
Calhoun Construction Services	390	EMI Construction	268				
		Engineered Structures Inc. (ESI)	146				

FIRM	RANK	FIRM	RANK	FIRM	RANK	FIRM	RANK
<b>M</b>		Moss	41	<b>P</b>		<b>Q</b>	
J.T. Magen & Co. Inc.	67	MWH Constructors Inc.	172	PARIC Holdings	177	Q&D Construction	240
Manhattan Construction Group	71	MYCON General Contractors Inc.	203	Parkway C&A	219	<b>R</b>	
Manson Construction Co.	237	Allan Myers	86	Parrish Construction Group Inc.	316	R&O Construction	287
March Associates Construction Inc.	299	<b>N</b>		Parsons Corp.	286	Ragle Inc.	400
Market & Johnson Inc.	311	Nabholz Construction Corp.	84	F.H. Paschen	139	RailWorks	130
MasTec Inc.	5	Nan Inc.	155	PC Construction Co.	355	Rand Construction Corp.	209
Matrix Service Co.	183	NEI General Contracting	313	PCL Construction Enterprises Inc.	11	William A Randolph Inc.	332
MATT Construction	359	New South Construction Co.	236	Peinado Construction	202	E. E. Reed Construction	69
McCarthy Holdings Inc.	20	Nexamp	251	PennTex Construction Co. Inc.	368	WT Rich Co.	367
McCownGordon Construction	169	Nibbi Bros. Associates Inc.	25	The PENTA Building Group	102	Ridgmont Commercial Co.	380
McDermott International	9	<b>O</b>		Pepper Construction	77	River City Construction LLC	320
McGough	118	O&G Industries Inc.	221	Performance Contractors Inc.	47	James E. Roberts - Obayashi Corp.	317
MCL Construction	351	W.E. O'Neil Construction Co.	107	Perlo Construction	292	Robins & Morton	52
The McShane Cos.	135	OHLA USA Inc.	101	Charles Perry Partners Inc.	288	Rockford Construction Co.	218
MEB	312	Okland Construction	70	Phillips Infrastructure Inc.	138	Rodgers Builders Inc.	173
Messer Construction Co.	79	R.D. Olson Construction	377	GH Phipps Construction Co.	271	Roebbelen Contracting Inc.	340
CR Meyer	184	Oltmans Construction Co.	248	Pike Construction Services	211	Rogers-O'Brien Construction	117
Michels	38	Opus	343	Pioneer General Contractors Inc.	250	Roncelli Inc.	239
The Middlesex Corp.	222	Orion Group Holdings Inc.	164	Pogues Construction Co. LP	374	The Rudolph Libbe Group	76
Millie and Severson General Contractors	258	Otto Construction	382	Poettker Construction Co.	339	Ruscilli Construction Co. LLC	266
Miron Construction Co. Inc.	74	C. Overaa & Co.	273	Pogue Construction	133	Russell Group Inc.	277
Morley Builders	394			Posillico Civil Inc.	166	Ryan Cos. US Inc.	43
Mortenson	22			Power Construction Co. LLC	92	Rycon Construction	120
				Primus	195		
				Place Services Inc.	291		

# Excellence *without the ego.*

## BUILT HERE 9

We see every obstacle as an opportunity to be better than we were the day before. We're not afraid to challenge the status quo, challenge conventional thinking, or challenge each other.

Here, we all have the chance to solve problems, to lead, to follow, and to try something new. For those inspired to build great things, the potential is limitless.



# Where To Find the Top 400

FIRM	RANK	FIRM	RANK	FIRM	RANK	FIRM	RANK
<b>S</b>		C D Smith Construction	207	<b>U</b>		Wespac Construction	389
S&B	137	SOLV Energy	66	Wharton-Smith Inc.	116	Whitaker Construction Co. Inc.	376
S&B USA	227	SpawGlass Holding	147	Ulliman Schutte Construction LLC	369	The Whiting-Turner Contracting Co.	4
Sachse Construction	388	Stacy and Witbeck Inc.	246	Urban Atelier Group	199	WIELAND	308
Samet Corp.	99	Staker Parson Materials & Construction	216	<b>V</b>		F.A. Wilhelm Construction Co. Inc.	54
Sampson Construction	247	Stellar	187	James R. Vannoy & Sons Construction Co. Inc.	141	Williams Brothers Construction	165
Satterfield & Pontikes Construction Inc.	140	STO Building Group	6	VCC LLC	185	Willmeng Construction Inc.	174
Saulsbury Industries Inc.	158	Suffolk Construction Co. Inc.	28	Vecellio Group Inc.	230	S. M. Wilson & Co.	387
Saunders Construction Inc.	233	Sukut Construction LLC	274	Verdex Construction	391	Wohlsen Construction Co.	358
Schimenti Construction Co.	285	Summit Contracting Group Inc.	121	Vericon Construction Co.	326	S. T. Wooten Corp.	323
CG Schmidt	276	Sundt Construction Inc.	46	Vinci Construction USA	110	<b>X</b>	
Sellen Construction Co. Inc.	223	Superior Construction Holding Co. Inc.	192	VJS Construction Services	383	XL Construction	215
SEMA Construction Inc.	265	Swinerton Inc.	30	<b>W</b>		<b>Y</b>	
Sevenson Environmental Services Inc.	289	<b>T</b>		Wagman Inc.	349	The Yates Cos. Inc.	27
Shaw Construction	260	Teichert Construction	119	Walbridge	24	<b>Z</b>	
Shawmut Design and Construction	61	Terminal Construction Corp.	399	Walsh Construction Co.	235	Zachry Construction Corp.	213
Shelco LLC	350	Torcon Inc.	198	The Walsh Group	16	Zachry Group	25
Shiel Sexton Co. Inc.	261	Traylor Construction Group Inc.	111	T N Ward Co.	281		
Shimmick	243	Triton Construction Co. LLC	352	Warfel Construction Co.	396		
Howard Shockey & Sons Inc.	371	Truebeck Construction	188	Water Resources Group	384		
Shook Construction	283	Turner Construction Co.	1	Webcor	122		
Skanska USA	12	Turner Industries Group LLC	44	Weis Builders Inc.	171		
Skender	228	Tutor Perini Corp.	33	The Weitz Co.	78		
Skyline Construction	193						
Sletten Cos.	156						



Sales: (214) 945-2199  
perryweather.com

# The weather safety system built for mission-critical work

➔ Get a Free 2 Week Trial Today



The screenshot displays a mobile weather application interface. It features several key sections:
 

- Current Conditions:** Shows temperature (78°), precipitation (1.2"), feels (78°), WBGT (78.2), and wind (12sw).
- Lightning Status:** Displays lightning strikes at 7:03 (0-10 mi) and 21:23 (10-20 mi), with a 'Clear' status for 20-30 mi.
- WBGT:** A line graph showing WBGT levels over time, with values ranging from 60° to 80°.
- Policy Risk Forecast:** A section indicating a 'High chance of wind speed ex' (likely exceeding a threshold) from 3:00 AM to 5:00 PM.
- Alerts:** A notification for a 'Lightning Strike 9.6 miles from your location at 1:04 PM. Seek shelter and wait for all clear signal.'

## 2025 Top 400 General Contractors – Subsidiaries by Rank

Rank Company *Subsidiary*

**1 Turner Construction Co.**

*Clark Builders  
EECruz  
RealPM  
SourceBlue, LLC  
TSIB  
The Lathrop Company  
Tompkins Builders  
Turner Construction Company  
Turner International*

**2 Bechtel**

*BNT International Company  
Bechtel Construction Operation, Inc.  
Bechtel Corporation  
Bechtel Global Energy, Inc.  
Bechtel Global Infrastructure & Minerals Inc.  
Bechtel India Private, Ltd.  
Bechtel Nuclear, Security & Environmental, Inc.*

**3 Kiewit Corp.**

*Cherne Contracting Company  
Construction Kiewit Cie  
Ganotec Inc.  
Kiewit Building Group Inc.  
Kiewit Canada Group Inc.  
Kiewit Engineering Group Inc.  
Kiewit Foundations Co.  
Kiewit Infrastructure Co.  
Kiewit Infrastructure South Co.  
Kiewit Infrastructure West Co.  
Kiewit Offshore Services Ltd.  
Kiewit Power Constructors Co.  
Kiewit Water Facilities South Co.  
Mass Electric Construction Co.  
Peter Kiewit Sons ULC  
T.E. Ibberson Company  
TIC - The Industrial Company  
Weeks Marine Inc.*

Rank Company *Subsidiary*

**5 MasTec Inc.**

*A-1 Construction  
Advanced Technologies  
Byers Engineering  
Casey Industrial  
Cash Construction  
Decisive Communication  
EC Source  
Energy Erectors  
FNF Construction, Inc.  
Hanging H  
Henkels & McCoy  
Infrastructure and Energy Alternatives, Inc.  
Intren, LLC  
Lemartec  
MasTec Canada  
MasTec Civil  
MasTec Network Solutions  
MasTec North America, Inc.  
MasTec Utility Services  
Phoenix Industrial, Inc.  
Precision Pipeline  
PumpCo  
QuadGen  
Stout Construction  
Three Phase Line Construction  
Wanzek*

**6 STO Building Group**

*Abbott Construction  
Ajax Building Company  
BCCI Construction  
Govan Brown  
LF Driscoll  
LF Driscoll Healthcare  
Pavarini Construction  
Pavarini McGovern  
RC Andersen  
STO Mission Critical  
Structure Tone Global Services  
Structure Tone International  
Structure Tone LLC  
Structure Tone Southwest*

## 2025 Top 400 General Contractors – Subsidiaries by Rank

Rank	Company	Subsidiary	Rank	Company	Subsidiary
7	Fluor	Fluor Constructors International Inc Fluor Enterprises Inc.			PCL Industrial Management Inc. PCL Industrial Services, Inc. PCL Investments Canada PCL McMaster 2014 Ltd. PCL NSP 2021 Ltd. PCL Ottawa Heart Institute 2014 Ltd. PCL Regina Stadium 2014 Ltd. The Companies of Nassal
8	DPR Construction	Digital Building Components EIG Electrical Systems GE Johnson Gregory P. Luth & Associates, Inc. / GPLA OES Equipment RQ Construction SurePods vConstruct	12	Skanska USA	Skanska USA Building Skanska USA Civil
9	McDermott International	CB&I Storage Solutions	17	Gilbane Building Co.	GRS Disaster Recovery Gilbane Federal Next 150
11	PCL Construction Enterprises Inc.	Construction PCL Inc. Melloy Industrial Services Inc. Nordic PCL Construction, Inc. PCL Aquatics Centre 2012 Ltd. PCL Builders Inc. PCL Buildings Inc. PCL Civil Constructors, Inc. PCL Construction Enterprises, Inc. PCL Construction Management Inc. PCL Construction Resources (U.S.A.) Inc. PCL Construction Resources Inc. PCL Construction Services, Inc. PCL Construction, Inc. PCL Constructors Canada Inc. PCL Constructors Inc. PCL Constructors Northern Inc. PCL Constructors Northern Ontario Inc. PCL Constructors Pacific Rim Pty Ltd. PCL Constructors Westcoast Inc. PCL Energy Inc. PCL Humber LRC 2013 Ltd. PCL Industrial Construction Co. PCL Industrial Constructors Inc.	20	McCarthy Holdings Inc.	MC Industrial, Inc. McCarthy Building Companies, Inc.
			21	Clayco	CRG Concrete Strategies Lamar Johnson Collaborative
			22	Mortenson	M. A. Mortenson Company Mortenson International, Inc.
			25	Zachry Group	JVIC JVIC Fabrication Madison Industrial Services Numerical Advisory Solutions Trillium Zachry Engineering Corp.

## 2025 Top 400 General Contractors – Subsidiaries by Rank

Rank	Company	Subsidiary	Rank	Company	Subsidiary
		Zachry Industrial Inc Zachry Maintenance Services Zachry Nuclear Engineering Zachry Philippines Inc	34	Alberici-Flintco	Alberici Constructors, Inc. Alberici Constructors, Ltd. CAS Constructors, LLC Flintco, LLC J. R. Filanc Construction Co. WWPS, LLC
27	The Yates Cos. Inc.	American Industrial Construction, LLC Blaine Construction Corporation Edwards Electric Service, LLC JESCO, Inc. Merit Electrical, Inc. Superior Asphalt, Inc. W.G. Yates & Sons Construction Company Yates Constructors, LLC Yates Engineers, LLC Yates Services, LLC	35	Barton Malow Holdings LLC	Barton Malow Builders Barton Malow Canada Barton Malow Company LIFTbuild
28	Suffolk Construction Co. Inc.	Liberty Builds Liberty Equipment Liberty Group Liberty Specialty	36	Gray	AD Process Equipment, A Gray Company Anderson Dahlen Inc., A Gray Company Gray AES Gray Development, A Gray Company Gray Ohio Valley NexGen Contracting, A Gray Company
32	Balfour Beatty US	Balfour Beatty Communities Balfour Beatty Construction Balfour Beatty Infrastructure Balfour Beatty Rail	37	Dragados	Dragados Canada Dragados USA, Inc. J.F. White John P. Picone Prince Contracting LLC Pulice Construction Inc. Schiavone Construction Co.
33	Tutor Perini Corp.	Becho Inc. Black Construction Frontier - Kemper Lunda Construction Perini Management Services Roy Anderson Corp. Rudolph & Sletten Tutor Perini Building Corp Tutor Perini Civil Construction	38	Michels	Aqueos Corporation Michels Canada Co. Michels Construction, Inc. Michels Pacific Energy, Inc. Michels Pipeline, Inc. Michels Power, Inc. Michels Road & Stone, Inc. Michels Trenchless GmbH

## 2025 Top 400 General Contractors – Subsidiaries by Rank

### Rank Company Subsidiary

*Michels Trenchless Pty. Ltd.*

*Michels Trenchless, Inc.*

*Michels Underground Cable, Inc.*

*Michels Utility Services, Inc.*

### 39 Granite Construction

*Garco Testing Laboratories*

*Granite Canada*

*Granite Industrial, Inc.*

*Intermountain Slurry Seal*

*International Directional Services (IDS)*

*Layne, a Granite Company*

*Lehman-Roberts, a Granite Company*

*Centennial Asphalt*

*Dickerson & Bowen*

*Granite Power, Inc.*

*Memphis Stone & Gravel, a Granite Company*

### 40 Consigli Building Group Inc.

*Consigli & Associates, LLC*

*Consigli Construction Co., Inc.*

*Consigli Construction NY, LLC*

*J. Benton Construction, LLC*

### 42 Burns & McDonnell

*AZCO*

### 44 Turner Industries Group LLC

*Turner Industrial Maintenance, LLC*

*Turner Specialty Services, LLC*

### 45 Black & Veatch

*Bird Electric*

*Black & Veatch Construction, Inc.*

*Black & Veatch Corporation*

*Black & Veatch International*

*Black & Veatch LTD of Michigan*

*Black & Veatch Management Consulting, LLC.*

*Black & Veatch New York LLP*

### Rank Company Subsidiary

*Black & Veatch Special Projects Corp*

*Overland Contracting, Inc.*

### 48 Big-D Construction

*CFC Construction*

*Dovetail Construction*

*Martin Harris Construction*

*McAlvain Construction*

### 49 The Kokosing Group of Cos.

*Area Aggregates, LLC*

*CK Construction Group, Inc.*

*Cuyahoga Asphalt Materials, Inc.*

*Integrity Kokosing Pipeline Services*

*Kokosing Construction Company, Inc.*

*Kokosing Industrial, Inc.*

*Kokosing Materials, Inc.*

*Kokosing, Inc.*

*McGraw Kokosing, Inc.*

*The Olen Corporation*

### 51 Flatiron Construction Corp.

*EE Cruz and Company, Inc.*

*Flatiron Construction Corp*

*Flatiron Constructors Canada Limited*

*Flatiron Constructors, Inc.*

*Flatiron West, Inc.*

### 53 Exyte Americas Holding Inc.

*AirGard, Inc.*

*BioPharm Engineered Systems, LLC*

*CollabraTech Solutions, LLC*

*Critical Process Systems Group, Inc.*

*Diversified Fluid Solutions, LLC*

*Exyte US, Inc.*

*Fab-Tech, Inc.*

*NHEP, Inc.*

*Nuance Systems, LLC*

*Total Facility Solutions*

## 2025 Top 400 General Contractors – Subsidiaries by Rank

Rank	Company	Subsidiary	Rank	Company	Subsidiary
54	F.A. Wilhelm Construction Co. Inc.	Freitag-Weinhardt, Inc. Industrial Electric Poynter Sheet Metal RSQ Fire Protection	66	SOLV Energy	CS Energy, LLC
55	Colas Inc.	Barrett Industries Colas Construction USA Inc. Colaska HRI Reeves Construction Co. Simon Sully-Miller Contracting Co.	68	Construction Partners Inc.	C.W. Roberts Contracting, Inc. FSC II, LLC Ferebee Corporation King Asphalt, Inc. The Scruggs Company Wiregrass Construction Company
59	Haskell	Benham Cortez, Inc. Dysruptek Seiberling	69	E. E. Reed Construction	DavisReed E.E. Reed Construction L.P. E.E. Reed East Coast Zapalac Reed
60	Ferrovial Construction	Ferrovial Construction US Corp Webber, LLC	70	Okland Construction	Field Labor Corporation Okland Construction Co., Inc. Okland Corporation Okland Management Corporation
64	Garney Holding Co.	A&W Maintenance & Coatings, LLC Garney Companies, Inc. Garney Federal, Inc. Garney Pacific, Inc.	71	Manhattan Construction Group	Cantera Concrete Company Manhattan Construction Company Manhattan International Construction Company, Ltd Manhattan Pipeline, LLC Manhattan Road & Bridge Safe Zone, LLC Spectrum Contracting, Inc.
65	Day & Zimmermann	D&Z Of Canada Corporate Day & Zimmermann International, Inc. - DBA M&C Day & Zimmermann Management Services, Inc. Day & Zimmermann NPS, Inc. Mason & Hanger The Atlantic Group, Inc. - DBA DZ Atlantic	75	The Christman Co.	Christman Constructors, Incorporated Christman Facility Solutions Christman Mid-Atlantic Constructors, LLC

## 2025 Top 400 General Contractors – Subsidiaries by Rank

Rank	Company	<i>Subsidiary</i>	Rank	Company	<i>Subsidiary</i>
76	The Rudolph Libbe Group	<i>GEM Inc. Rudolph Libbe Inc. Rudolph Libbe Properties</i>	90	Ferreira Construction Co. Inc.	<i>American Pile and Foundation, LLC Ferreira Power South, LLC Ferreira Power West, LLC Ferreira UTEC Richardson-Wayland-Ferreira Sm Electric Vanguard Energy Partners, LLC</i>
77	Pepper Construction	<i>Pepper Construction Company Pepper Construction Indiana Pepper Construction Ohio Pepper Construction Wisconsin Pepper Energy</i>	92	Power Construction Co. LLC	<i>UISC, PLLC</i>
78	The Weitz Co.	<i>Contrack Watts The Weitz Company</i>	93	Lane Industries Inc.	<i>The Lane Construction Corporation</i>
79	Messer Construction Co.	<i>EGC Construction</i>	94	The Cianbro Cos.	<i>A/Z Corporation Cianbro Corporation Cianbro Development Corporation Cianbro Equipment, LLC Cianbro Fabrication &amp; Coating Corporation R.C. Stevens Starcon International, Inc. Total Specialty Services</i>
88	PJ Dick - Trumbull - Lindy Group	<i>Gulisek Construction Lindy Paving P. J. Dick Incorporated Trumbull Corporation Wilson Excavating and Utility Construction LLC</i>	96	Adolfson & Peterson Construction	<i>AP Gulf States, Inc. AP Midwest, LLC AP Mountain States, LLC AP Southwest, LLC AP Wyoming, LLC</i>
89	Coastal Construction Group	<i>Coastal Condominiums Coastal Condominiums II Coastal Condominiums of Central Florida Coastal Construction Company Coastal Construction International Holdings Coastal Construction of Bakers Bay Coastal Construction of Central Florida Coastal Construction of Miami Dade Coastal Construction of Palm Beach Coastal Construction of Tampa Coastal Homes</i>	99	Samet Corp.	<i>Samet Samet Samet Samet Samet Samet</i>

## 2025 Top 400 General Contractors – Subsidiaries by Rank

Rank Company *Subsidiary*

101 OHLA USA Inc.

*Arellano Construction Company  
Community Asphalt Corporation  
Judlau Contracting, Inc.  
Judlau Contracting, Inc.  
OHLA Building, Inc.  
OHLA Central, Inc.  
OHLA Systems & Electric, LLC  
OHLA USA, Inc.  
OHLA USA, Inc.  
OHLA USA, Inc.*

102 The PENTA Building Group

*All 5's Construction  
Amoroso Construction*

107 W.E. O'Neil Construction Co.

*W.E. O'Neil Construction Company  
W.E. O'Neil Construction Company of Arizona  
W.E. O'Neil Construction Company of  
California  
W.E. O'Neil Construction Company of Colorado  
W.E. O'Neil Construction Company of NorCal  
W.E. O'Neil Construction Company of San  
Diego  
W.E. O'Neil Construction Company of  
Tennessee  
W.E. O'Neil Construction Company of Texas*

108 Bartlett Cocke General Contractors  
LLC

*BC Industrial  
BC Residential*

109 ESS Cos.

*Achen-Gardner Construction, LLC.  
Emery Sapp & Sons, Inc  
Premier Testing Laboratories, LLC.  
Rummel Construction, Inc.*

Rank Company *Subsidiary*

110 Vinci Construction USA

*Blythe Construction, Inc.  
Eurovia Atlantic Coast, LLC  
Hubbard Construction Company*

112 Herzog Enterprises Inc.

*Herzog Contracting Corp.  
Herzog Energy, Inc.  
Herzog Railroad Services, Inc.  
Herzog Services, Inc.  
Herzog Solutions, LLC  
Herzog Technologies Infrastructure, Inc.  
Herzog Technologies, Inc.  
Herzog Transit Services, Inc.*

114 Hawaiian Dredging Construction Co.  
Inc.

*DHO JV  
H2O Guam JV  
HDCC Guam LLC*

115 Commercial Contracting Corp.

*Commercial Contracting de Mexico*

123 Barnard Construction Co. Inc.

*BFBC, LLC  
Barnard Bessac JV  
Barnard CBNA Joint Venture  
Barnard Constructors of Canada, LP  
Barnard Nexar Joint Venture  
Barnard Pipeline  
Barnard Spencer Joint Venture  
Barnard Wilson Joint Venture  
Barnard of Nevada, Inc.  
Keiwiit Barnard JV*

125 ASRC Industrial

*AIS Infrastructure  
Arctic Pipe Inspection*

## 2025 Top 400 General Contractors – Subsidiaries by Rank

Rank	Company	Subsidiary	Rank	Company	Subsidiary
		EQM			S&B Infrastructure Private, Ltd.
		F.D. Thomas			S&B Northeast Operations, Ltd.
		Gulf Coast Industrial			S&B Pipeline Division, Ltd.
		HRCS			TAI Engineers, LLC
		Hudspeth			
		K2 Industrial			
		Mavo Systems	138	Phillips Infrastructure Inc.	Phillips & Jordan, Inc
		National Environmental Group			Row Con
		Niles Construction Services			
		Northwest Demolition & Decommissioning			
		Omega			
		Petrochem	140	Satterfield & Pontikes Construction Inc.	
		RSI			Eagle Contracting
		U.S. Coatings			Greco Structures
129	KPRS Construction Services Inc.				Prolego Consulting Services
		BergmanKPRS			Rollcon
		Dreyfuss Construction			Westway Construction
		KPRS Hawaii Corporation			
135	The McShane Cos.		142	Goodfellow Bros.	
		Cadence McShane Construction Company			Blasting Technology, Inc.
		McShane Construction Company			Goodfellow Bros. California, LLC
					Goodfellow Bros. LLC
136	Dennis Group		143	ECC	
		Dennis Brasil Engenharia Ltda			ECC Constructors, LLC
		Dennis Grou International, Unipessoal Lda			ECC Diego Garcia, LLC
		Dennis Group Canada, Inc.			ECC Environmental, LLC
		IFAB Engineering Partners Ltd			ECC International, LLC
		The Dennis Engineering Group, LLC			ECC Sydney Tar Ponds, ULC
		The Dennis Group, Inc.			ECCO GmbH
					Enviro-Fix Solutions, LLC
					Environmental Chemical Corporation Italy S.r.l
137	S&B		144	Cajun Industries Holdings LLC	
		Bibb Engineers, Architects & Constructors, LLC			Cajun Engineering Solutions, LLC
		Ford, Bacon & Davis, LLC			Cajun Industries, LLC
		S&B Engineers & Constructors			Cajun Technology Solutions, LLC
		S&B Fabrication Services, Ltd.			
		S&B Group International, Ltd.			
		S&B Infrastructure Construction, Ltd.			
		S&B Infrastructure Engineering, Ltd.			

## 2025 Top 400 General Contractors – Subsidiaries by Rank

Rank	Company	Subsidiary	Rank	Company	Subsidiary
145	Graham Construction	Gracorp, Inc. Graham Construction & Management, Inc Graham Construction Services, Inc. Graham Construction, Inc. Graham Contracting Ltd. Graham Group (US) Inc. Graham Industrial Maintenance Inc Milender White Inc. Moltz Construction, Inc.			
147	SpawGlass Holding	SpawGlass Civil Construction, Inc. SpawGlass Construction Corporation SpawGlass Contractors, Inc.			
149	Lease Crutcher Lewis	Lease Crutcher Lewis LLC Lease Crutcher Lewis WA LLC			
150	Carroll Daniel Construction Co.	Carroll Daniel Engineering Steelworks, LLC			
151	IPS-Integrated Project Services LLC	BS Denmark Aps trading at Integrated Project Services ILPS Limited Unipessoal LDA IPS - Architect Services Canada Inc IPS - Integrated Project Services (Germany) GmbH IPS - Integrated Project Services (Ireland) Limited IPS - Integrated Project Services Corp IPS - Integrated Project Services GmbH IPS - Integrated Project Services LLC IPS - Integrated Project Services Limited IPS - Integrated Project Services Pvt Ltd IPS - Integrated Project Services ULC IPS - Mehtalia Private Limited			
					IPS - Services de Projects Intégrés S.E.N.C IPS - Servicios de Proyectos Integrados Ltda IPS BioPharmaceutical Technical Consulting (Tianjin) Limited Liability Company IPS Bioengineering Technology (Shanghai) Co., Ltd IPS Professional Engineers and Architects PC Integrated Project Services International Pvt Ltd Trenmor GmbH trading as IPS-Integrated Project Services Trenmor PTY Limited trading as IPS Life Sciences
			153	Jingoli - DCO	Creamer Jingoli, LLC E-J / Jingoli Battery Storage JV ES/Jingoli Decommissioning, LLC JDC Energy Services, LLC JP Energy, LLC Jingoli Power, LLC
			154	Hanover Co.	Hanover R.S. Construction LLC
			155	Nan Inc.	Bannister Insurance Company Grace Pacific LLC
			156	Sletten Cos.	OS Construction Services Resolute Performance Iron SCC Energy Services Sletten Construction Company Sletten Construction of Nevada Sletten Construction of Wyoming
			161	C.W. Driver Cos.	C.W. Driver

## 2025 Top 400 General Contractors – Subsidiaries by Rank

Rank	Company	Subsidiary	Rank	Company	Subsidiary
		<i>Driver SPG</i>	177	PARIC Holdings	<i>Aptos</i>
		<i>Good &amp; Roberts</i>			<i>Cooperative Building Solutions</i>
162	LEMOINE	<i>DCMC Partners</i>			<i>Henning Companies</i>
		<i>LEMOINE Disaster Recovery</i>			<i>Paric Corporation</i>
		<i>Matrix Building Systems</i>			<i>TES</i>
167	Branch Group	<i>Branch Builds</i>	189	Graycor Inc.	<i>Graycor Construction Company</i>
		<i>Branch Civil</i>			<i>Graycor Industrial Contractors</i>
		<i>Hopkins Lacy</i>			<i>Graycor Southern, Inc.</i>
168	Lee Lewis Construction Inc.	<i>Lee Lewis Construction headquarters</i>	192	Superior Construction Holding Co. Inc.	<i>Superior Construction Co., Inc.</i>
		<i>Lee Lewis Construction office</i>			<i>Superior Construction Southeast LLC</i>
		<i>Lee Lewis Construction office</i>			
172	MWH Constructors Inc.	<i>Methuen Construction Co., Inc.</i>	193	Skyline Construction	<i>ACCEND Construction LLC d/b/a Skyline Construction Illinois</i>
		<i>Slayden Constructors, Inc.</i>			<i>Servicemark Construction LLC</i>
					<i>Skyline Capital Builders LLC</i>
					<i>Skyline Commercial Interiors, Inc. d/b/a</i>
					<i>Prevost Construction</i>
					<i>Unimark Construction LLC d/b/a Skyline Construction</i>
176	Iovino Enterprises	<i>IOVINO AFFILIATES JV</i>	194	FCI Constructors Inc.	<i>FCI Constructors of New Mexico, LLC.</i>
		<i>IPC RESILIENCY PARTNERS</i>			<i>FCI Constructors of Wyoming, LLC.</i>
		<i>J-TRACK LLC</i>			
		<i>JT TC JOINT VENTURE</i>			
		<i>JTCM PARTNERS</i>			
		<i>JUDLAU-TC JV</i>			
		<i>MLJ CONTRACTING CORP</i>			
		<i>MLJT JV</i>			
		<i>MLJTC2</i>			
		<i>TC ELECTRIC, LLC</i>			
		<i>TC-JT RUTGERS JV</i>			
		<i>WELKIN J TRACK JV</i>	195	Primus	<i>Primus Builders, Inc.</i>
		<i>WELKIN MECHANICAL, LLC</i>			<i>Primus Design Services, Inc.</i>
			196	Bulley & Andrews	<i>Bulley &amp; Andrews Rock City, LLC.</i>

## 2025 Top 400 General Contractors – Subsidiaries by Rank

Rank	Company	Subsidiary	Rank	Company	Subsidiary
197	Electrical Consultants Inc.	EPC Services Company PS Technologies, Inc.			The Winter Companies
208	Gemma Power Systems	Gemma Plant Operations LLC Gemma Renewable Power LLC	227	S&B USA	Fay, S&B USA Construction S&B USA Concessions S&B USA Construction
212	Dick Anderson Construction	Chanen Construction Compahny PYRAMID Cabinet	233	Saunders Construction Inc.	Saunders Concrete Structures, LLC Saunders Construction, LLC Saunders Express, LLC Saunders North Express, LLC Saunders North, LLC Saunders Norwood Construction, LLC
213	Zachry Construction Corp.	Zachry Federal Construction Corporation Zachry Underground and Utility Services, Inc	237	Manson Construction Co.	Manson Marine Canada, Ltd.
214	H&M Co. Inc.	Concrete Systems Co., LLC Electrical Systems Co., LLC H&M Architects/Engineers, Inc. H&M Industrial Services	241	Crowder Constructors Inc.	Crowder Construction Company Crowder Industrial Construction LLC
215	XL Construction	Arrow Equipment Rental & Supply Bradley Concrete Elevated Construction Services TimberQuest	242	Klinger Cos. LLC	Gleeson Constructors & Engineers, L.L.C. Klinger Contractors, LLC W.A. Klinger, L.L.C. Younglove Construction, L.L.C.
222	The Middlesex Corp.	Massachusetts Ready-Mix, LLC Middlesex Asphalt, LLC Middlesex Materials Holdings, Inc. Middlesex Paving, LLC	243	Shimmick	21stCentury Rail Corporation Gilcrease Constructors Gilcrease Developers LLC Gilcrease Holding Company LLC Myers & Sons / Shimmick Construction Company, Inc. Joint Venture Rust Constructors, Inc. SFI Leasing Company ShiShimmick Construction Company, Inc.
226	Independence Construction	Bear IC, LLC Donley's Independence, LLC			

## 2025 Top 400 General Contractors – Subsidiaries by Rank

Rank	Company	Subsidiary
		<i>Shimmick Construction Company Inc. / Danny's Construction Co., LLC, Joint Venture Shimmick Construction Company Inc. / Nicholson Joint Venture Shimmick Construction Company, Inc. / California Engineering Contractors, Inc., Joint Venture Shimmick Construction Company, Inc. / Con- Quest Contractors, Inc., Joint Venture Shimmick Construction Company, Inc. / Disney Construction, Inc., Joint Venture Shimmick Construction Company, Inc. / FCC Construccion S.A. / Impregilo S.P.A., Joint Venture Shimmick Construction Company, Inc. / Parson Construction Group, Inc., Joint Venture Shimmick/Traylor/Granite JV Skansa USA Civil, Inc. / Shimmick Construction Company, Inc. / Herzog Contract Corp., Joint Venture The Leasing Corporation Washington Group / Alberici Joint Venture</i>
246	<b>Stacy and Witbeck Inc.</b>	<i>Modern Railway Systems</i>
249	<b>M. B. Kahn Construction Co. Inc.</b>	<i>M. B. Kahn Specialty, LLC M. B. Kahn Waterworks, LLC</i>
250	<b>Pioneer General Contractors Inc.</b>	<i>Metal Tech Building Specialties Phoenix Framing Tailored Building Systems Weaver Cooke Construction</i>
257	<b>Bradbury Stamm Construction Inc.</b>	<i>Bradbury Stamm Construction Winkelman, LLC</i>

Rank	Company	Subsidiary
258	<b>Millie and Severson General Contractors</b>	<i>Millie and Severson - Northern California Millie and Severson - Southern California Smith and Severson Builders Storie and Severson Construction</i>
260	<b>Shaw Construction</b>	<i>DHM Exteriors LLC Shaw Construction LLC Shaw Construction of Utah LLC Shaw Construction of Wyoming LLC</i>
261	<b>Shiel Sexton Co. Inc.</b>	<i>Anova Technical Services Engineered Facades</i>
263	<b>Knutson Construction</b>	<i>Knutson Construction Services Midwest Inc. Knutson Construction Services Rochester, Inc. Knutson Construction Services, Inc.</i>
264	<b>CRB</b>	<i>CRB Architects - Engineers P.C. CRB Builders, LLC CRB Germany, GmbH CRB Group, GmbH Clark, Richardson and Biskup Consulting Engineers, Inc.</i>
265	<b>SEMA Construction Inc.</b>	<i>SEMA Precast, Inc</i>
271	<b>GH Phipps Construction Co.</b>	<i>GH Phipps Wyoming</i>

## 2025 Top 400 General Contractors – Subsidiaries by Rank

Rank	Company	Subsidiary	Rank	Company	Subsidiary
277	Russell Group Inc.	<i>Russell Construction Co, Inc. Russell Construction Co, KC, LLC Russell Construction Co, STL, LLC</i>	300	Kiely Family of Cos.	<i>ALL Bright Electric JF Kiely Construction of PA JF Kiely Service Co K Moorea Co Kiely Civil LLC Kiely Engineering Kiely Industrial Kiely Pipeline Integrity Northeast Equip Co Penn Bower</i>
278	J. Fletcher Creamer & Son Inc.	<i>Creamer Jingoli LLC Creamer Ruberton Joint Venture Creamer-Sanzari Joint Venture J. Fletcher Creamer &amp; Son, Inc.</i>	304	Haselden Construction	<i>HRS Restoration Services</i>
279	Armada Hoffler	<i>Armada Hoffler Construction Company</i>	314	Bryan Construction Inc.	<i>Bryan 77 Construction JV, LLC Bryan Ashush JV Bryan International, LLC</i>
282	Lyles Construction Group	<i>AMERICAN PAVING CO. LYLES UTILITY CONSTRUCTION, LLC NEW ENGLAND SHEET METAL &amp; MECHANICAL W. M. LYLES CO.</i>	320	River City Construction LLC	<i>A&amp;H Steel, LLC MR Mason Contractor, LLC River City Design Group</i>
292	Perlo Construction	<i>Perlo Structures Reimers &amp; Jolivette Construction Reimers &amp; Jolivette Structures</i>	321	Deacon Construction LLC	<i>Deacon Construction, LLC</i>
295	Harper General Contractors	<i>Harper General Contractors Harper General Contractors Harper General Contractors Harper General Contractors Harper General Contractors</i>	327	Absher Construction Co.	<i>Nuuco Electric Total Rentals</i>
297	Boh Bros. Construction Co. LLC	<i>Broadmoor, LLC</i>	333	Blum Construction	<i>Blum Masonry Performance Interiors Contracting</i>

## 2025 Top 400 General Contractors – Subsidiaries by Rank

Rank	Company	Subsidiary	Rank	Company	Subsidiary
340	Roebbelen Contracting Inc.	Roebbelen Construction Management Services, Inc.	372	CDI Contractors	Custom Millwork
342	CDM Smith	CDM Constructors Inc. CDM Federal Programs CDM International The Perry Group Trinnex	373	LPX Group	Bluegrass Testing Lab Louisville Paving Co Material Transfer Co Pace Contracting, LLC
349	Wagman Inc.	Wagman Construction, Inc. Wagman Heavy Civil, Inc. Wagman Heavy Civil, Inc. Wagman Heavy Civil, Inc.	384	Water Resources Group	Rice Lake Construction Group Rice Lake West
354	KBE Building Corp.	KBE-NY, LLC New Valley Construction, LLC	386	Blythe Development Co.	Blythe Brothers Asphalt Co. Blythe Development Co.
362	Kitchell Corp.	Kitchell CEM Kitchell Contractors	391	Verdex Construction	Verdex Construction
364	CF Evans Construction	CF Evans	394	Morley Builders	Benchmark Contractors, Inc. MB Contractors, Inc. Morley Construction Company
367	WT Rich Co.	W.T. Rich Company	397	Landry/French Construction	MH Williams
369	Ulliman Schutte Construction LLC	Clark / US - Back River, LLC Ulliman Schutte - Alberici A Joint Venture			

# Where the 2025 Top 400 General Contractors Worked

Region Country Company

## A. NORTH AMERICA

### Canada

AECOM  
APTIM  
ARCO Construction Cos.  
Alberici-Flintco  
Barnard Construction Co. Inc.  
Barton Malow Holdings LLC  
Bechtel  
Black & Veatch  
Burns & McDonnell  
Day & Zimmermann  
Dennis Group  
Dragados  
ECC  
Flatiron Construction Corp.  
Fluor  
Granite Construction  
HITT Contracting  
Haskell  
Herzog Enterprises Inc.  
Kiewit Corp.  
MasTec Inc.  
Matrix Service Co.  
McDermott International  
Michels  
PCL Construction Enterprises Inc.  
Parsons Corp.  
RailWorks  
Roncelli Inc.  
STO Building Group  
T N Ward Co.  
The Walsh Group  
Turner Construction Co.  
Tutor Perini Corp.  
Walbridge

Region Country Company

## B. LATIN AMERICA

### Brazil

Caddell Construction Co. LLC  
IPS-Integrated Project Services LLC  
McDermott International

### Chile

Bechtel  
Fluor

### Colombia

Haskell

### Ecuador

Haskell

### Guatemala

BL Harbert International  
Haskell

### Guyana

McDermott International

### Honduras

BL Harbert International  
Fluor

### Mexico

Alberici-Flintco  
BL Harbert International  
Caddell Construction Co. LLC  
Commercial Contracting Corp.  
Fluor  
Gilbane Building Co.  
Granite Construction  
Haskell  
Kiewit Corp.  
Manhattan Construction Group  
MasTec Inc.  
Michels  
Primus  
The Beck Group  
The Weitz Co.

# Where the 2025 Top 400 General Contractors Worked

## Region Country Company

*Walbridge*

## Panama

*Kiewit Corp.*

## Peru

*APTIM*

*Bechtel*

*Fluor*

## Uruguay

*IPS-Integrated Project Services LLC*

*Tutor Perini Corp.*

## C. CARIBBEAN ISLANDS

### Cuba

*DPR Construction*

*Gilbane Building Co.*

*Jingoli - DCO*

### Greater Antilles

*Haskell*

### Lesser Antilles

*Caddell Construction Co. LLC*

*Consigli Building Group Inc.*

*Haskell*

*Jingoli - DCO*

*McDermott International*

*Orion Group Holdings Inc.*

*Rockford Construction Co*

### Puerto Rico

*ARCO Construction Cos.*

*Fluor*

*Great Lakes Dredge & Dock Co.*

*Herzog Enterprises Inc.*

*LEMOINE*

*MasTec Inc.*

*The Walsh Group*

*Tutor Perini Corp.*

## Region Country Company

## D. EUROPE

### Albania

*Bechtel*

### Azerbaijan

*Fluor*

### Belgium

*ECC*

*Fluor*

*IPS-Integrated Project Services LLC*

*Parsons Corp.*

### Croatia

*Fluor*

### Czech Rep.

*McDermott International*

### Denmark

*DPR Construction*

*Fluor*

### Finland

*Gray*

### France

*Fluor*

### Georgia

*Parsons Corp.*

### Germany

*Black & Veatch*

*CRB*

*DPR Construction*

*ECC*

*Fluor*

*Gilbane Building Co.*

*IPS-Integrated Project Services LLC*

*McDermott International*

*Michels*

*Parsons Corp.*

# Where the 2025 Top 400 General Contractors Worked

## Region Country Company

### Greece

*Caddell Construction Co. LLC*  
*ECC*  
*Fluor*

### Hungary

*Fluor*

### Ireland

*Bechtel*  
*Fluor*  
*Haskell*  
*IPS-Integrated Project Services LLC*  
*STO Building Group*

### Italy

*Caddell Construction Co. LLC*  
*ECC*  
*Parsons Corp.*

### Luxembourg

*Bryan Construction Inc.*

### Netherlands

*DPR Construction*  
*Fluor*  
*McDermott International*  
*STO Building Group*

### North Macedonia

*Bechtel*

### Norway

*DPR Construction*

### Poland

*Fluor*

### Portugal

*ECC*  
*IPS-Integrated Project Services LLC*

### Romania

*ECC*

## Region Country Company

### Serbia

*Bechtel*

### Slovakia

*Fluor*

### Slovenia

*Fluor*

### Spain

*APTIM*  
*ECC*  
*IPS-Integrated Project Services LLC*

### Sweden

*BL Harbert International*  
*Fluor*

### Switzerland

*DPR Construction*  
*IPS-Integrated Project Services LLC*

### United Kingdom

*APTIM*  
*Bechtel*  
*Black & Veatch*  
*Burns & McDonnell*  
*ECC*  
*Fluor*  
*Gray*  
*IPS-Integrated Project Services LLC*  
*McDermott International*  
*Parsons Corp.*  
*STO Building Group*  
*Turner Construction Co.*

## E. MIDDLE EAST

### Afghanistan

*ECC*  
*Fluor*

### Bahrain

*ECC*

# Where the 2025 Top 400 General Contractors Worked

## Region Country Company

*The Weitz Co.*

## Iraq

*BL Harbert International*

## Israel

*Bryan Construction Inc.*

*Gilbane Building Co.*

*MWH Constructors Inc.*

## Kuwait

*Fluor*

## Lebanon

*BL Harbert International*

*Parsons Corp.*

## Oman

*Bechtel*

## Qatar

*BL Harbert International*

*Bechtel*

*McDermott International*

## Saudi Arabia

*Bechtel*

*Caddell Construction Co. LLC*

*Fluor*

*Gilbane Building Co.*

*McDermott International*

*The Weitz Co.*

*Tutor Perini Corp.*

## Turkey

*BL Harbert International*

*Caddell Construction Co. LLC*

*ECC*

*Fluor*

*Turner Construction Co.*

## United Arab Emirates

*Bechtel*

*McDermott International*

*Parsons Corp.*

## Region Country Company

## F. ASIA

## China (P.R.C.)

*Black & Veatch*

*Fluor*

*Haskell*

*McDermott International*

## Diego Garcia

*APTIM*

*Gilbane Building Co.*

*Parsons Corp.*

## India

*BL Harbert International*

*Bechtel*

*Black & Veatch*

*Fluor*

*IPS-Integrated Project Services LLC*

*McDermott International*

*Turner Construction Co.*

## Indonesia

*BL Harbert International*

*Black & Veatch*

*Fluor*

*McDermott International*

## Japan

*APTIM*

*ECC*

*Gilbane Building Co.*

*Haskell*

*Parsons Corp.*

## Kazakhstan

*Fluor*

## Korea, South

*DPR Construction*

*Gilbane Building Co.*

*Parsons Corp.*

# Where the 2025 Top 400 General Contractors Worked

## Region Country Company

### Kyrgyzstan

*APTIM*  
*ECC*

### Malaysia

*Black & Veatch*  
*DPR Construction*  
*Fluor*  
*Haskell*  
*McDermott International*  
*Turner Construction Co.*

### Philippines

*Black & Veatch*  
*ECC*  
*Fluor*  
*Haskell*  
*Tutor Perini Corp.*

### Singapore

*DPR Construction*  
*Fortis Construction*  
*Haskell*

### Taiwan (R.O.C)

*Bechtel*  
*Black & Veatch*

### Thailand

*BL Harbert International*  
*Black & Veatch*

### Turkmenistan

*Caddell Construction Co. LLC*

### Vietnam

*BL Harbert International*  
*Black & Veatch*  
*McDermott International*  
*Turner Construction Co.*

## Region Country Company

### G. AUSTRALIA/OCEANIA

#### Australia

*Bechtel*  
*Fluor*  
*IPS-Integrated Project Services LLC*  
*Lane Industries Inc.*  
*Matrix Service Co.*  
*McDermott International*  
*Michels*  
*PCL Construction Enterprises Inc.*

#### Pacific Islands

*APTIM*  
*Haskell*  
*Parsons Corp.*

### H. NORTH AFRICA

#### Egypt

*Bechtel*

#### Morocco

*BL Harbert International*

#### Sub Sahara

*Caddell Construction Co. LLC*

### I. CENTRAL AND SOUTHERN AFRICA

#### Angola

*McDermott International*

#### Botswana

*Fluor*

#### Cape Verde Islands

*Caddell Construction Co. LLC*

#### Congo

*Haskell*

## Where the 2025 Top 400 General Contractors Worked

Region Country Company

D.R. Congo (Zaire)

*BL Harbert International*

Ivory Coast

*Haskell*

Malawi

*BL Harbert International*

Mozambique

*Haskell*

*McDermott International*

Rwanda

*CRB*

South Africa

*Fluor*

Uganda

*Fluor*

J. ANTARCTIC/ARCTIC

Antarctic/Artic

*Parsons Corp.*